

# Digital Atlas of Cystoscopy



*Jan Schönebeck*

This booklet and CD are published and sponsored by Astra Tech AB. This publication reflects Dr. Schönebeck's findings during cystoscopy and not necessary the view of Astra Tech. Copyright of the concept "Digital Atlas of Cystoscopy" belongs to Astra Tech. Pictures on the CD are free to use, but please reference Dr. Jan Schönebeck.

# C O N T E N T S

Preface	4
Abnormal vessels. Bleeding	5
Bladder cancer Urothelial dysplasia Ureteral cancer	6
Bladder diverticulum + various	12
Bladder fistulas (colon – vagina – uterus)	13
Bladder septum or membrane. Züdlér incontinence prosthesis	14
Bladder stones. Ureteral and urethral stones	15
Bricker conduit – coecocystoplasty	18
Clothes Line Man	18
Cystitis cystica + glandularis	19
Diseases of the prostate	20
Ectopic ureteral orifice	23
Indwelling catheter – complications	26
Internal urethrotomy	29
Interstitial (Hunner) – cystitis	29
Intrusion from outside the bladder	30
Large Bladder Bezoar	30
Litholapaxy	31
Non specific cystitis – inflammation	31
Normal anatomy + epithelial metaplasia + pseudopolyps	32
Penis + external urethral orifice	36
Resection of ureteral orifice	36
Suprapubic cystoscopy + ureteral stent	37
The Amazon River Fish	37
Trabeculation	38
Tuberculous cystitis – Bilharzia – Amyloidosis	38
TUR-P + complications	39
Ureteral cancer. Deep resection of ureteral orifice	42
Ureterocele A and B	43
Urethral diverticulum in male – operation of	44
Urethral stricture – fistulation – diverticulum	44

# P R E F A C E

In the beginning of the 80ies it was regarded as impossible to take good quality photos inside the urinary bladder due to insufficient light conditions. Being a urologist with an interest in photo documentation I solved this problem. In 1984 I published a selection of my photos in the book "Atlas of cystoscopy" which was soon sold out. However, my interest continued. When I retired about 1500 slides rested in my boxes. After purging some about 800 remained. I realised that my heirs would have no interest in my slides. They were most likely to be destructed. Furthermore, the slides were fairly bulky. I decided to digitalize them and by that I solved both problem, they now occupied only three DVDs and could be saved for long-term.

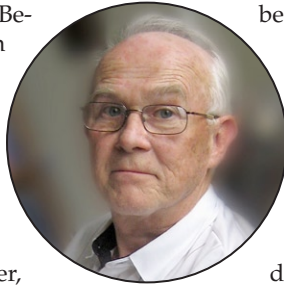
However my wish is that my pictures should be made easily available for education, making it possible for young physicians to have

the possibility to learn the spectrum of the cystoscopic appearance of bladder diseases. The photos could also, for educational purposes, be used in PowerPoint presentations, in text-books, in scientific articles and case reports.

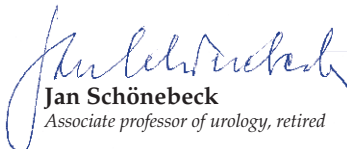
To achieve this it was necessary to adapt the material to fit into one CD and to have the possibility to distribute it to as many hospitals as possible.

I therefore contacted Astra Tech. The company immediately declared that they were willing to support the project. The result is now in your hands, a CD named "Digital Atlas of Cystoscopy" and which at no cost is distributed to a large number of urologists, surgeons and gynecologists.

I want to thank Astra Tech for their generous support which made creation of this CD possible. It contains about 800 cystoscopy photos illustrating a majority of all findings you might find with cystoscopy.

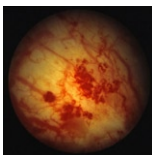


*Ljungby, Sweden, August 2007*

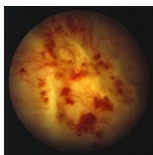
  
**Jan Schönebeck**  
*Associate professor of urology, retired*



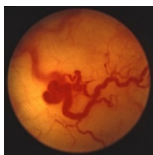
## Abnormal vessels. Bleeding



001. Abnormal vessels  
- radiotherapy



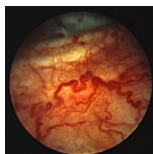
002. Abnormal vessels  
after radiotherapy



003. Abnormal vessels  
after radiotherapy



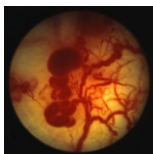
004. Abnormal vessels  
after radiotherapy



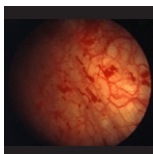
005. Abnormal  
vessels of bladder wall  
- radiotherapy



006. Abnormal vessels  
- radiotherapy



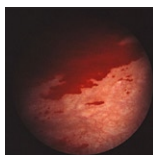
007. Abnormal vessels  
- radiotherapy



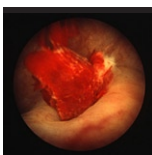
008. Bleeding from  
bladder wall caused  
by urine retention



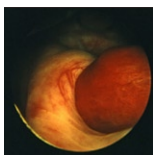
009. Bleeding from  
bladder wall caused  
by rapid emptying of  
urine retention



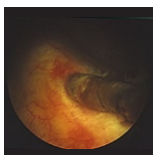
010. Bleeding in  
bladder wall caused by  
bladder stone



011. Clot leaving left  
ureter



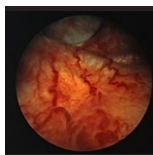
012. Fresh clot leaving  
right ureter



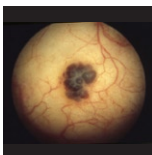
013. Old clot (almost  
black) leaving right  
ureter



014. Slightly abnormal  
vessels - radiotherapy



015. Varicose vessels of  
bladder wall

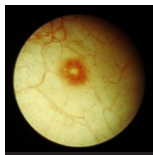


016. Haemangioma A  
- urinary bladder

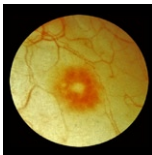


017. Haemangioma  
A of urinary bladder  
- close-up

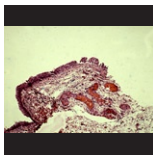
### Haemangioma B + microscopic examination



018. Haemangioma B  
- urinary bladder



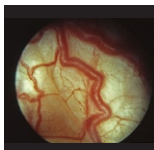
019. Haemangioma B  
- urinary bladder  
close-up



020. Biopsy -  
haemangioma B

**Bladder cancer  
Urothelial dysplasia  
Ureteral cancer**

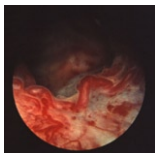
Bladder cancer  
- various



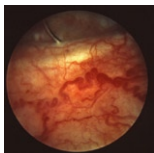
021. Abnormal blood vessels close to bladder tumour



022. Abnormal large vessel feeding bladder tumour



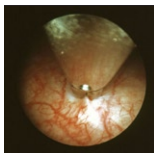
023. Abnormal vessels close to bladder tumour



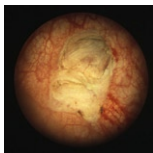
024. Abnormal vessels close to bladder tumour. TUR imminent



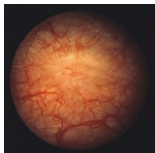
025. Bladder biopsy



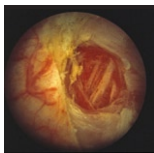
026. Bladder biopsy



027. Bladder cancer grade 1 after biopsy



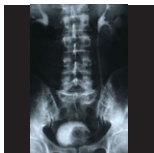
028. Bladder scar after TUR



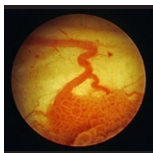
029. Bladder wall after TUR



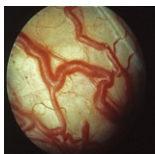
030. Healed ureteral orifice after TUR for bladder cancer



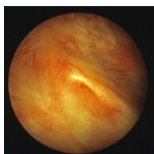
031. Large bladder cancer at i.v. urography



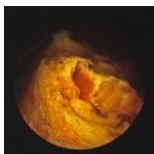
032. Large vessel feeding the bladder cancer grade 2



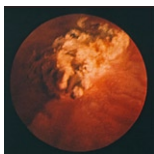
033. Large vessels feeding bladder cancer



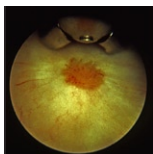
034. Lower lip of ureteral orifice resected and healed



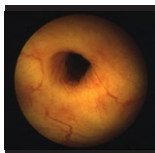
035. Occluded ureter after resection. Dilated.



036. Radiotherapy cystitis and necrosis



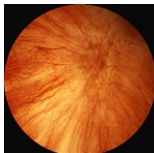
037. Recurrent bladder cancer. Biopsy ongoing



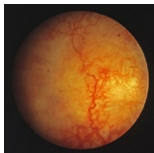
038. Resected ureteral orifice



039. Resected ureteral orifice



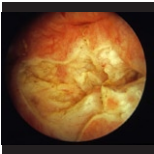
040. Scar after TUR



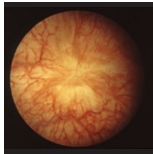
041. Scars after earlier TURs



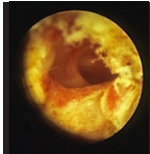
042. Small stones growing in TUR - scar



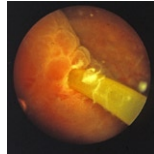
043. Status post resection of bladder cancer



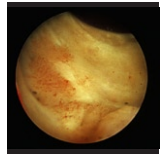
044. TUR - scar



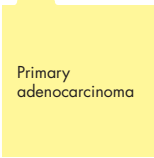
045. Ureter occluded by bladder cancer. After TUR dilated ureter



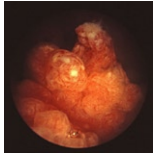
046. Ureteral splint after TUR close to orifice



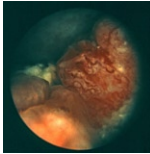
047. Urothelial cancer in TUR-P cavity



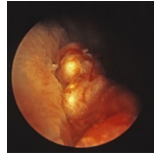
Primary adenocarcinoma



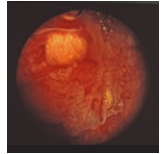
048. Primary adenocarcinoma of the bladder



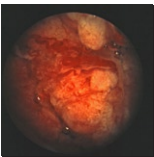
049. Primary adenocarcinoma of the bladder



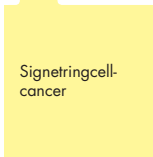
050. Primary adenocarcinoma of the bladder



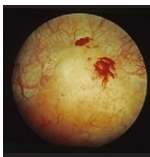
051. Primary adenocarcinoma of the bladder



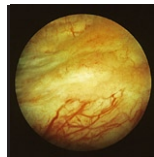
052. Primary adenocarcinoma of the bladder



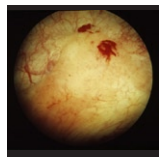
Signetringcell-cancer



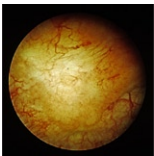
053. Bladder cancer - signetringcell



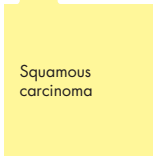
054. Signetringcell-cancer



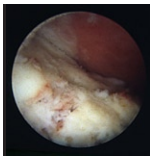
055. Signetringcell-cancer



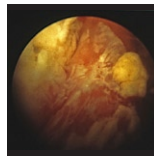
056. Signetringcell-cancer



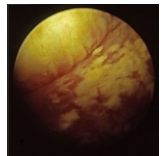
Squamous carcinoma



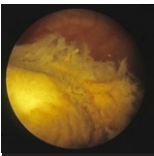
057. Bladder carcinoma - squamous



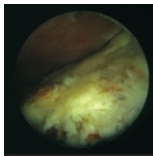
058. Bladder squamous carcinoma



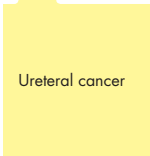
059. Bladder cancer - squamous



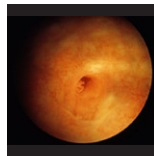
060. Bladder squamous carcinoma



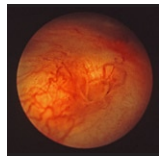
061. Squamous carcinoma of the bladder



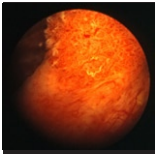
Ureteral cancer



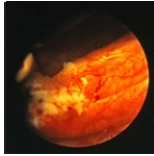
062. EP. Resected ureteral cancer. Recurrence



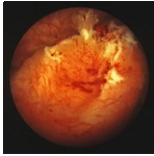
063. EP. Ureteral cancer - recurrence puts out its tongue



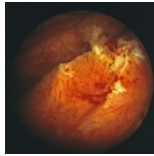
064. Ureteral cancer bulging into the bladder



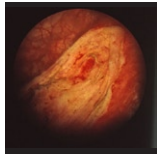
065. Larger part of ureteral cancer resected



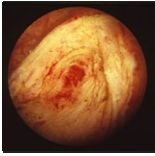
066. Resection of ureteral cancer grade 2



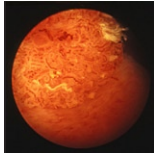
067. Resection of ureteral cancer grade 2



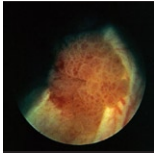
068. Resection of ureteral cancer - small tumour remnant



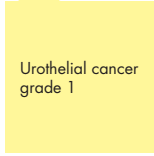
069. Ureteral cancer completely resected



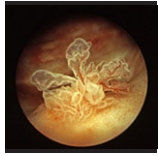
070. Ureteral cancer grade 2 bulging into the bladder



071. Ureteral cancer grade 2 from left orifice



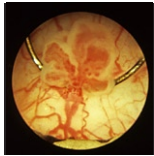
Urothelial cancer grade 1



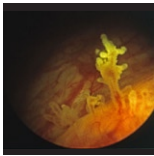
072. Bladder cancer grade 1



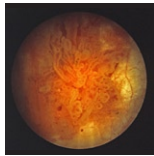
073. Bladder cancer grade 1 - cloverleaf



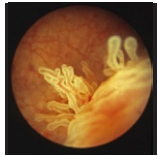
074. Bladder cancer grade 1 - doomsday



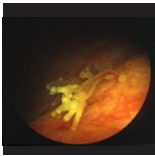
075. Urothelial cancer grade 1



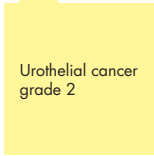
076. Urothelial cancer grade 1



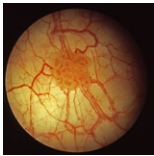
077. Urothelial cancer grade 1



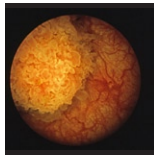
078. Urothelial cancer grade 1 - coral like



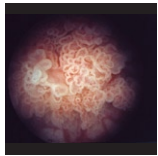
Urothelial cancer grade 2



079. Bladder cancer grade 2



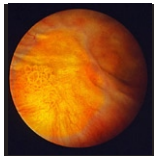
080. Bladder cancer grade 2



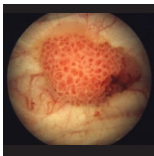
081. Bladder cancer grade 2 - cluster of grapes



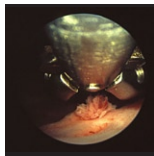
082. Bladder cancer grade 2 - diverticulum



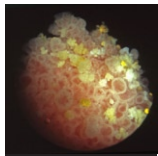
083. Early grade 2 recurrence in scar close to orificium



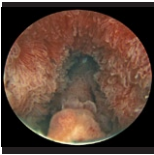
084. Grade 2 cancer



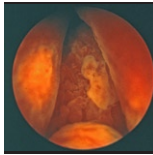
085. Grade 2 cancer - Dooms day approaching



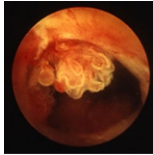
086. Grade 2 cancer - encrustations



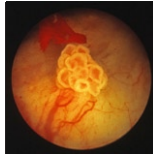
087. Grade 2 cancer in prostatic part of the urethra



088. Grade 2 cancer in prostatic part of urethra



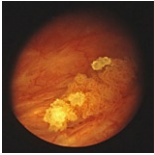
089. Grade 2 cancer in prostatic urethra



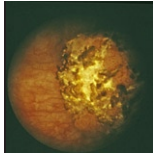
090. Grade 2 cancer with blood clot



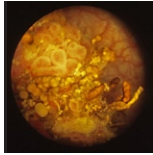
091. Grade 2 cancer with blood clot garland



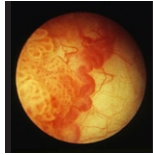
092. Grade 2 cancer with calcification



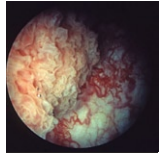
093. Grade 2 cancer with encrustation



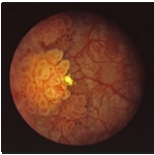
094. Grade 2 cancer with encrustations



095. Grade 2 cancer with feeding vessel



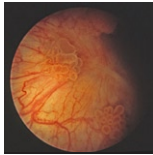
096. Grade 2 cancer with plentiful vascular supply



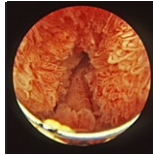
097. Grade 2 cancer with small encrustation



098. Grade 2 cancer with strange vessel



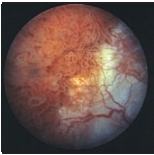
099. Grade 2 recurrences in old scar



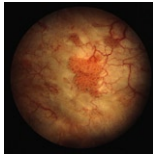
100. Grade 2 urothelial cancer in prostatic part of urethra



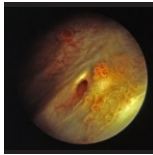
101. Grade 2 recurrence in TUR scar



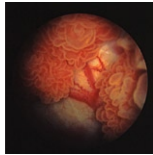
102. Large grade 2 cancer



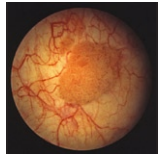
103. Multiple recurrences grade 2 in scar



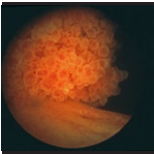
104. Some small grade 2 cancers



105. Two grade 2 tumours with feeding vessels



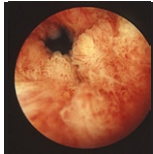
106. Urothelial cancer grade 2



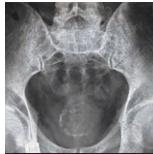
107. Urothelial cancer grade 2 close to ureteral orifice



108. Urothelial cancer grade 2 in prostatic part of urethra



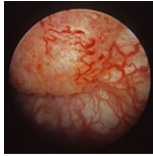
109. Urothelial cancer grade 2 in prostatic part of urethra.



110. X-ray, Bladder cancer with calcifications



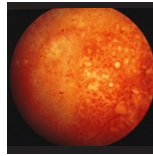
Urothelial cancer grade 3



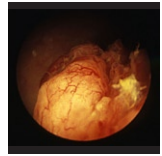
111. Bladder cancer grade 3 in bladder roof



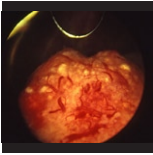
112. Bladder cancer grade 3



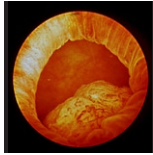
113. Bladder cancer grade 3



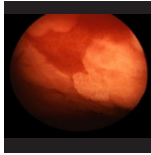
114. Bladder cancer grade 3



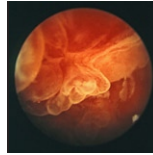
115. Bladder cancer grade 3 facing Dooms Day



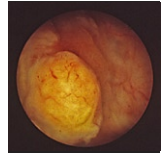
116. Bladder cancer grade 3 in diverticulum



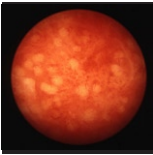
117. Flat, grade 3 cancer in bladder roof



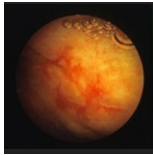
118. Grade 3 cancer in bladder roof



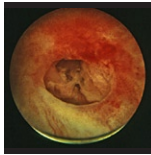
119. Grade 3 bladder cancer



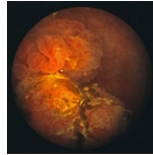
120. Grade 3 cancer in bladder roof



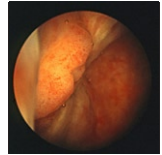
121. Grade 3 cancer in bladder roof + gas bubbles



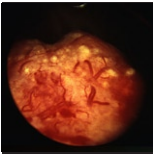
122. Grade 3 cancer in diverticulum. Ca. in situ at diverticulum edge



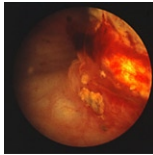
123. Grade 3 cancer solid as well as ridged



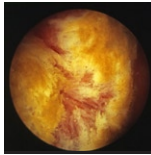
124. Grade 3 recurrence in bladder scar



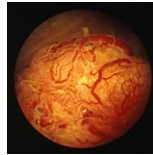
125. Grade 3 urothelial cancer



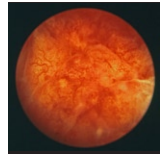
126. Grade 3 urothelial cancer



127. Grade 3, encrusted cancer

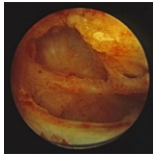


128. Urothelial cancer grade 3

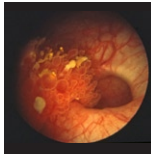


129. Urothelial cancer grade 3

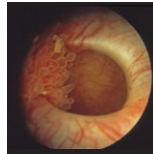
Urothelial cancer in bladder diverticulum



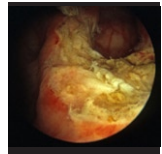
130. Carcinoma in situ at upper edge of diverticulum



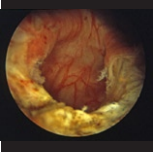
131. Diverticulum A. Urothelial cancer grade 2



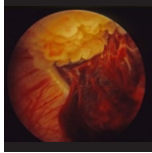
132. Diverticulum A. Urothelial cancer grade 2



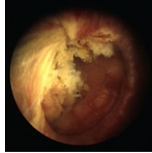
133. Diverticulum A after TUR



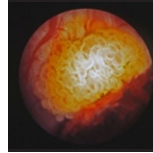
134. Diverticulum A after TUR for urothelial cancer grade 2



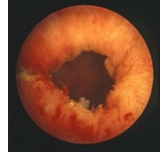
135. Diverticulum B. Clot and urothelial cancer grade 2



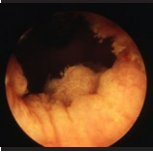
136. Diverticulum B. TUR has just started



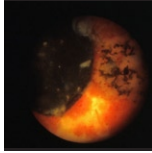
137. Diverticulum B. Urothelial cancer grade 2



138. Diverticulum C. Urothelial cancer grade 2



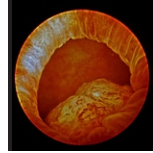
139. Diverticulum C. Urothelial cancer grade 2



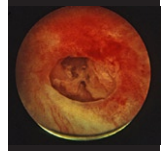
140. Diverticulum D clotfilled and urothelial cancer



141. Diverticulum D. Three months after TUR



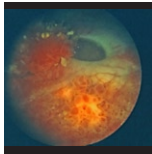
142. Diverticulum. Urothelial cancer grade 3



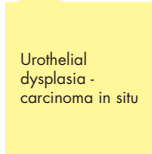
143. Diverticulum. Urothelial cancer grade 3. Edge biopsy, ca. in situ



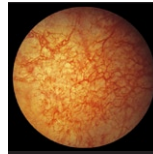
144. I.v. urography shows bladder diverticulum



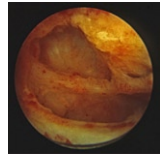
145. Urothelial cancer grade 2 on its way into diverticulum



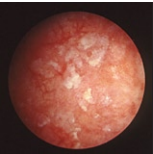
Urothelial dysplasia - carcinoma in situ



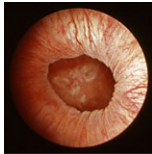
146. Carcinoma in situ



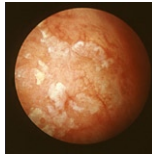
147. Carcinoma in situ at upper edge of diverticulum



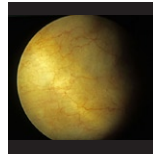
148. Diverticula bottom - epithelial dysplasia



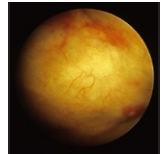
149. Diverticulum. Epithelial dysplasia in bottom



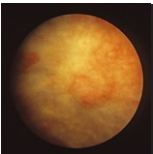
150. Epithelial dysplasia in bottom of diverticulum



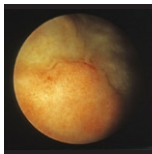
151. Normal area in bladder A with epithelial dysplasia



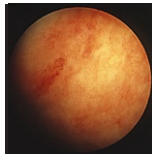
152. Urothelial dysplasia bladder A



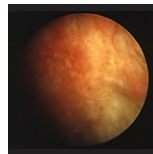
153. Urothelial dysplasia bladder A



154. Urothelial dysplasia bladder A



155. Urothelial dysplasia



156. Urothelial dysplasia

# Bladder diverticulum + various



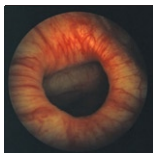
157. Rotting suture keeping splint in place



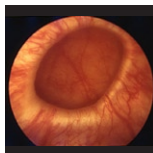
158. Biopsy from nonspecific ulceration in diverticulum bottom



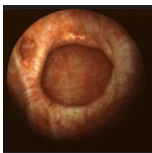
159. Bladder diverticulum



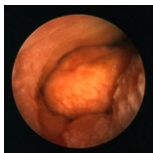
160. Bladder diverticulum



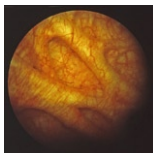
161. Bladder diverticulum



162. Bladder diverticulum



163. Bladder roof dipping into prostatic urethra. Atonic bladder



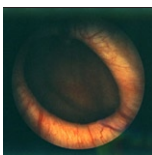
164. Bladder trabeculation



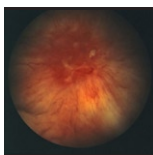
165. Catgut suture cutting through bladder wall



166. Diverticulum. Epithelial dysplasia at bottom



167. Large bladder diverticulum



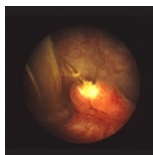
168. Nonspecific ulceration in bladder diverticulum



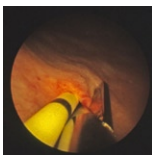
169. Small bladder diverticulum



170. Stent in ureter after operation according to Boari



171. Suture holding splint in place but cutting through bladder wall



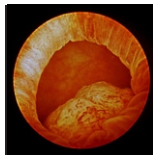
172. Ureteral orifice cut open



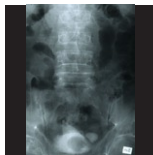
173. Ureteral splint



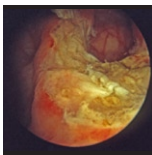
174. Bladder cancer grade 2 growing into a diverticulum A



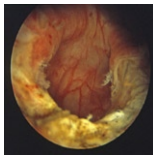
175. Bladder diverticulum - urothelial cancer grade 3



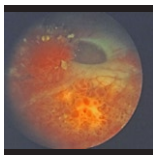
176. Bladder diverticulum at i.v. urography



177. Diverticulum A after TUR

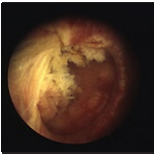


178. Diverticulum A and bladder cancer grade 2 after TUR

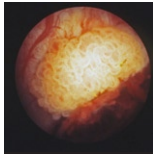


179. Diverticulum A. Urothelial cancer grade 2





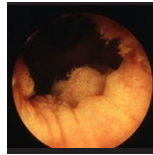
180. Diverticulum B, grade 2 tumour, TUR instituted



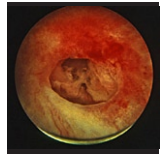
181. Diverticulum B. Close up cancer grade 2



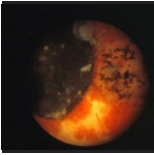
182. Diverticulum C, cancer grade 2



183. Diverticulum C, cancer grade 2



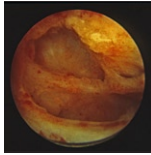
184. Diverticulum cancer grade 3. Ca. in situ in edge biopsy



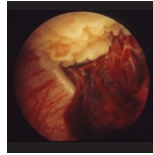
185. Diverticulum D clot-filled, urothelia cancer grade 2



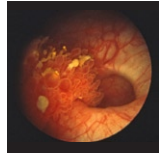
186. Diverticulum D three months after TUR



187. Diverticulum with septum. Ca. in situ in upper edge



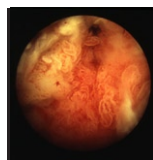
188. Diverticulum, blood clot, cancer grade 2



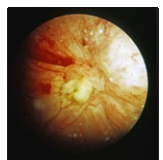
189. Urothelial cancer grade 2 growing into diverticulum A

## Bladder fistulas (colon - vagina - uterus)

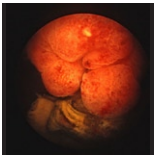
## Vesico-intestinal fistula



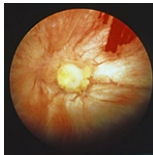
190. Vesicointestinal fistula - colonic cancer



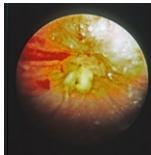
191. Vesicointestinal fistula - sigmoiditis



192. Vesicointestinal fistula - sigmoiditis



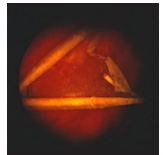
193. Vesicointestinal fistula - sigmoiditis



194. Vesicointestinal fistula - sigmoiditis



195. Vesicointestinal fistula - sigmoiditis



196. Vesicointestinal fistula - vegetable remnants in the bladder



197. Vesicointestinal fistula with fecal intrusion - sigmoiditis

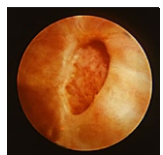


198. Vesicosigmoidal fistula B - sigmoiditis

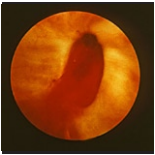


199. Vesicosigmoidal fistula B - sigmoiditis

## Vesico-uterine fistula caused by sectio cesarea



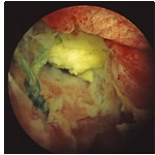
200. Vesico-uterine fistula in middle of period



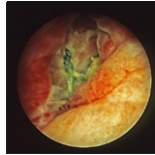
201. Vesico-uterine fistula - menstruation



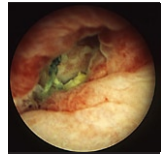
Vesico-vaginal fistula



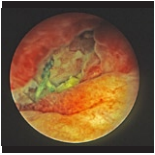
202. Vesico-vaginal fistula A after hysterectomi



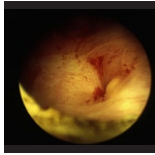
203. Vesicovaginal fistula A



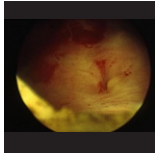
204. Vesicovaginal fistula A



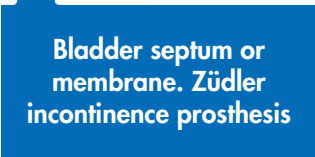
205. Vesicovaginal fistula A



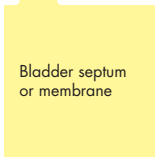
206. Vesicovaginal fistula B after hysterectomi



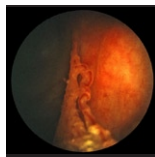
207. Vesicovaginal fistula B



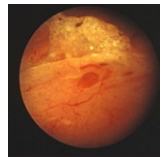
Bladder septum or membrane. Züidler incontinence prosthesis



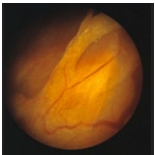
Bladder septum or membrane



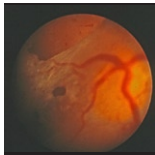
208. Bladder membrane B



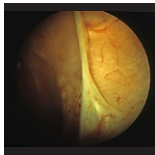
209. Bladder membrane B sideways view



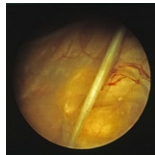
210. Bladder membrane B



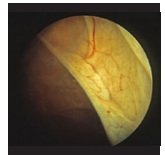
211. Bladder membrane B



212. Bladder membrane seen from above



213. Bladder membrane seen from above



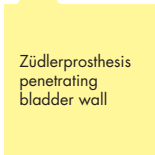
214. Bladder membrane



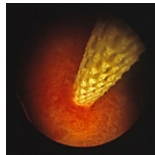
215. Bladder membrane



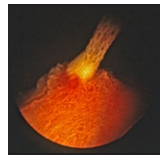
Bladder membrane



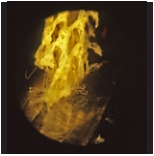
Züidlerprosthesis penetrating bladder wall



216. Züidler sling has cut through the bladder



217. Züidler sling has perforated the bladder wall

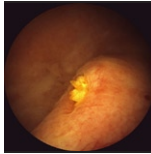


218. Züdlersling  
halfway cut through

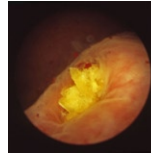


The Züdlers urine  
incontinence sling

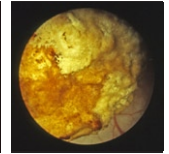
## Bladder stones. Ureteral and urethral stones



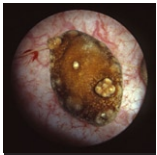
219. Birth of a ureteric  
stone



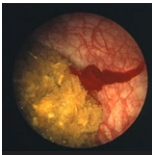
220. Birth of a ureteric  
stone - close up



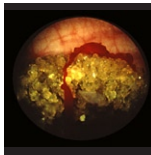
221. Bladder stone



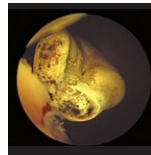
222. Bladder stone



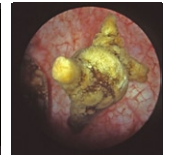
223. Bladder stone  
with blood clot



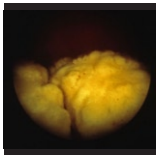
224. Bladder stone  
with blood clot



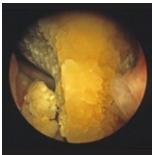
225. Bladder stone  
with foot



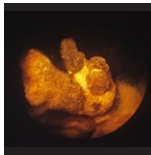
226. Bladder stone,  
mine- or corallike



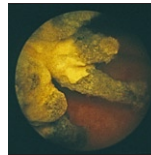
227. Bladder stone  
- asteroidlike



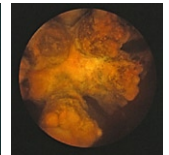
228. Bladder stone  
- carafé corkformed



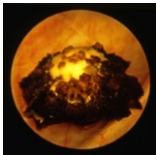
229. Bladder stone  
- coral like



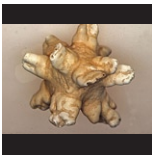
230. Bladder stone  
- coral like



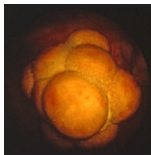
231. Bladder stone  
- coral- or minelike



232. Bladder stone  
- jellyfishlike



233. Bladder stone  
- minelike



234. Bladder stone  
- mulberrylike



235. Bladder stone  
- olivelike



236. Bladder stones  
- geometrical, darkened  
background



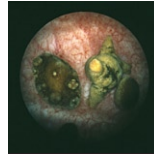
237. Bladder stones, geometrical



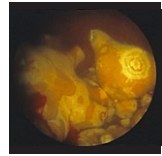
238. Geometrical bladder stones



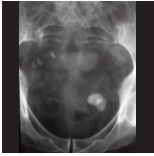
239. Pyramidal bladderstone



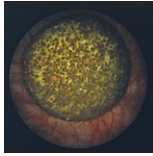
240. Bladder stones - different



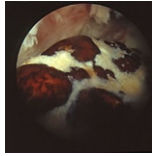
241. Bladder stones - Barbarafamily like



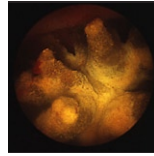
242. Bladder stones - X-ray



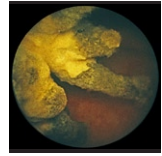
243. Bladderstone



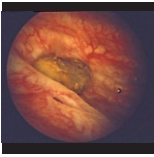
244. Bladderstone - like black and white patterned cow



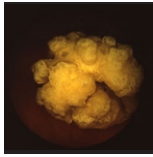
245. Corallike bladderstone



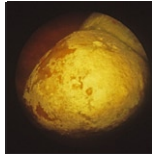
246. Corallike bladderstone



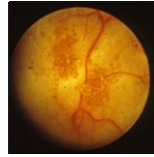
247. Dull bladder stone at right urethral orifice



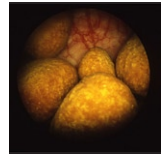
248. Irregular bladder stone



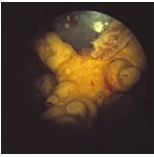
249. Large bladder stones



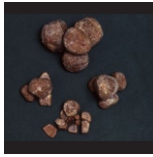
250. Many small bladder stones



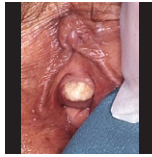
251. Marblelike bladder stones



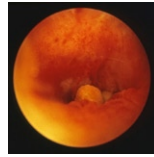
252. Minelike bladder stone + catheter balloon. Suprapubic cystoscopy



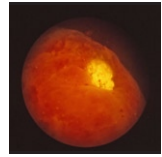
253. Multiple marblelike bladder stones



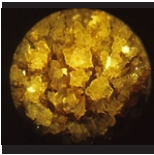
254. Painful delivery of bladder stone



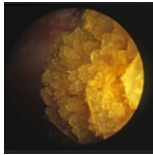
255. Concrements proximal to urethral stricture in female with MS



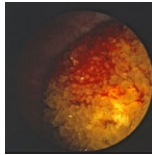
256. Painful delivery of ureteric stone into the bladder



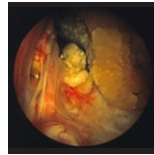
257. Razorsharp bladder stone



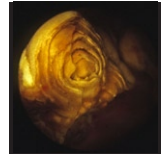
258. Razorsharp bladder stone



259. Sharp bloodstained bladder stone



260. Stones in prostatic part of the urethra



261. Stratified bladder stone after partial lithotripsy



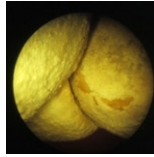
262. Three dull bladder stones



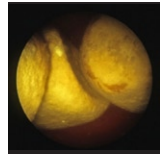
263. Ureteral stone in left orifice. Incision of the orificium to begin



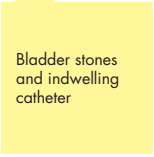
Articulated bladder stones



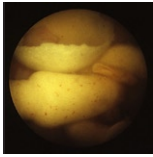
264. Articulated bladder stones



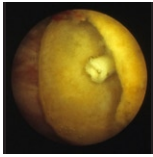
265. Articulated bladder stones



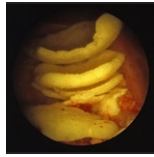
Bladder stones and indwelling catheter



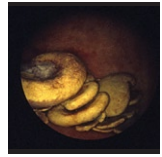
266. Old and fairly fresh casts of catheter balloon + catheter tip



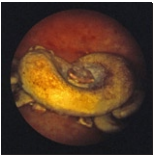
267. Cast of catheter balloon in urinary bladder



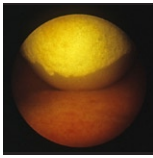
268. Catheter balloon shell-stones



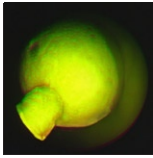
269. Catheter balloon stones - soup-platestones



270. Soup plate stone



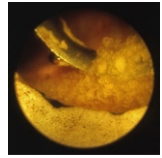
271. Catheter balloon with incrustation



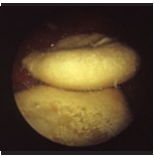
272. Catheter balloon with incrustation



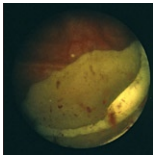
273. Catheter balloon - incrustation



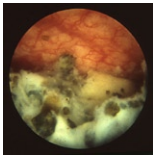
274. Lithotripsy-urette



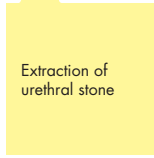
275. Old balloon shell-stone



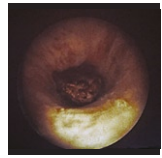
276. Shell stone from bladder catheter balloon



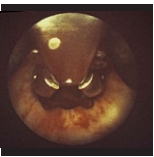
277. Small bladder stone + fibrin. Patient with indwelling catheter



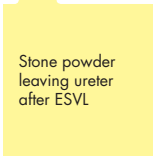
Extraction of urethral stone



278. Urethral stone stuck in urethra



279. Stone extraction with biopsy forceps



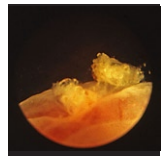
Stone powder leaving ureter after ESVL



280. Stone powder after ESVL leaving ureter

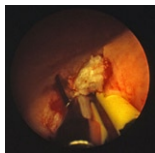


281. Stone powder after ESVL leaving ureter

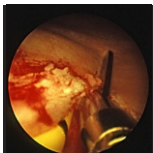


282. Stone powder after ESVL leaving ureter

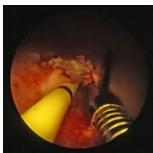
**Transurethral ureteric stone extraction**



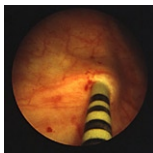
283. Cutting open too narrow ureteral orifice at stone extraction



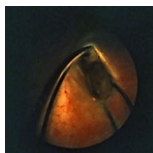
284. Cutting open too narrow ureteral orifice



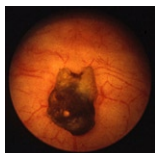
285. Cutting open too narrow ureteral orifice



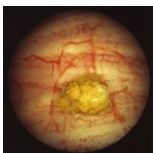
286. Dormia basket catheter on its way into ureter



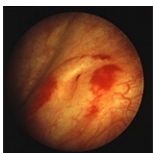
287. Dormia basket with stone



288. Extracted stone



289. Extracted stone in bladder

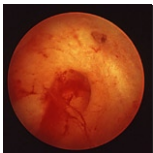


290. Ureteral orifice after stone extraction

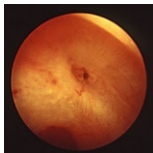
**Bricker conduit - coecocystoplasty**



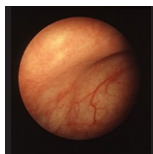
291. Bricker conduit



292. Bricker conduit with ureteral opening



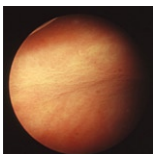
293. Bricker conduit with ureteral orifice



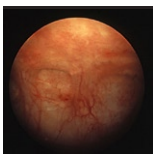
294. Coecocystoplasty



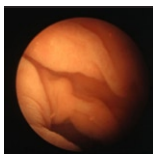
295. Coecocystoplasty - border coecum - bladder



296. Coecocystoplasty - colonic part

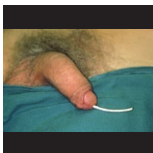


297. Coecocystoplasty - border coecum - bladder

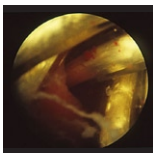


298. Coecocystoplasty - coecal part

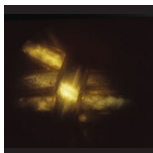
**Clothes Line Man**



299. Clothes line man



300. Clothes line, suprapubic cystoscopy



301. Clothes line - the intravesical knot - suprapubic cystoscopy





302. Clothes line in the bladder. Sectio alta

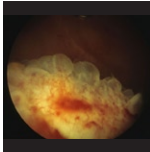


303. Clothes line

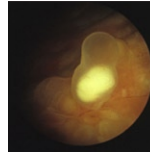


The Clothes Line man

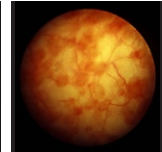
# Cystitis cystica + glandularis



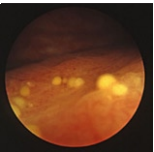
304. Cystitis cystica



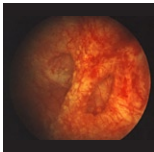
305. Cystitis cystica



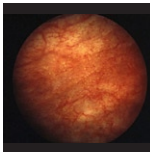
306. Cystitis cystica



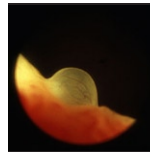
307. Cystitis cystica



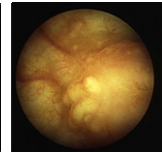
308. Cystitis cystica - widely spread



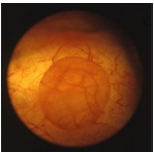
309. Cystitis cystica and non-specific cystitis



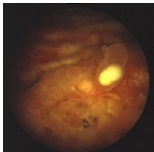
310. Cystitis cystica at bladder neck



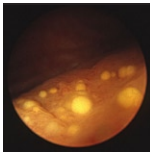
311. Cystitis cystica, multilocular



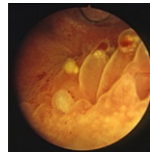
312. Cystitis cystica



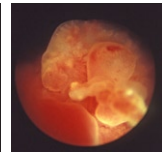
313. Cystitis cystica



314. Cystitis cystica



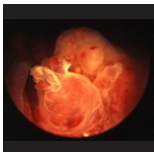
315. Cystitis glandularis



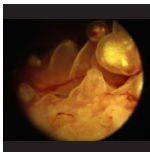
316. Cystitis glandularis



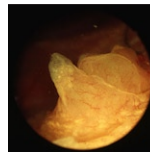
317. Cystitis glandularis



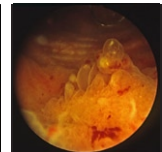
318. Cystitis glandularis



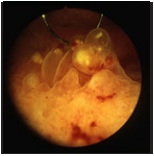
319. Cystitis glandularis close-up



320. Cystitis glandularis close-up

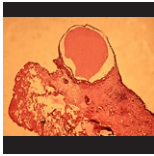


321. Cystitis glandularis

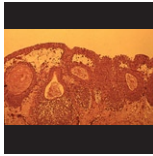


322. Cystitis glandularis - imminent TUR

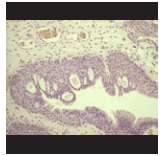
Microscopic examination of cystitis cystica and glandularis



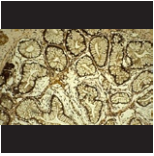
323. PAD - Cystitis cystica



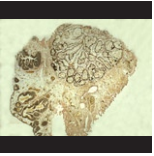
324. PAD - Multiple cystitis cystica



325. PAD - cystitis glandularis



326. PAD - cystitis glandularis



327. PAD - cystitis glandularis

## Diseases of the prostate

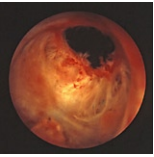
Bladder neck sclerosis and barrier



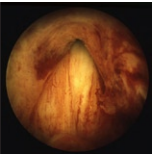
328. Bladder neck sclerosis after open operation



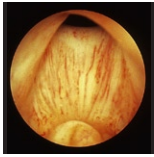
329. Bladder neck sclerosis after TUR-P



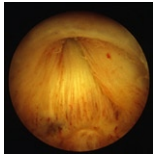
330. Bladder neck sclerosis after TUR-P



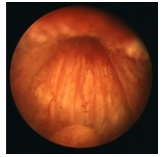
331. Posterior barrier obstructing the urethra



332. Posterior barrier of the prostate

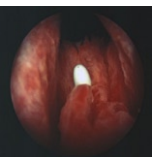


333. Primary bladder neck sclerosis

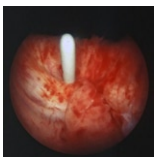


334. Primary bladder neck sclerosis

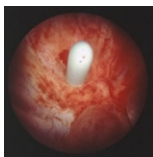
Ectopic ureter in man + epithelial cysts + cavernous hemangioma



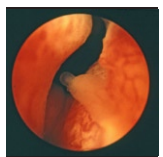
335. Ectopic ureter opening in the prostate



336. Ectopic ureter in the prostate



337. Ectopic ureter opening in the prostate

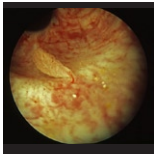


338. Benign epithelial cyst - prostate part of the urethra

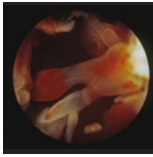




339. Benign epithelial cyst - prostate



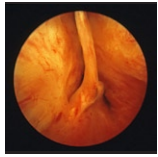
340. Benign epithelial polyp in prostatic part of the urethra



341. Benign epithelial polyps - prostate



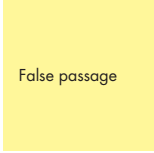
342. Fibroma at the verumontanum



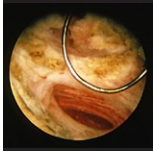
343. Fibroma distal to the verumontanum



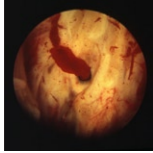
344. Cavernous haemangioma at the verumontanum



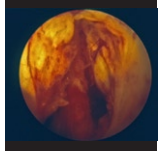
False passage



345. False prostatic passage being resected



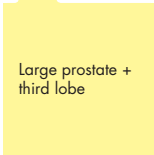
346. Fresh false passage A in the prostate



347. Fresh false passage of the prostate



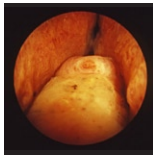
348. Healed false passage A in the prostate



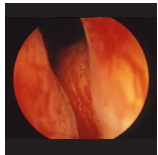
Large prostate + third lobe



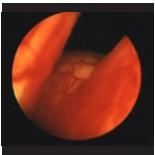
349. Big prostate - verumontanum



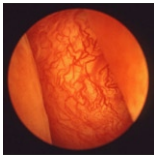
350. Enlarged prostate. Fairly large verumontanum



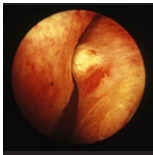
351. Large prostate and large third lobe



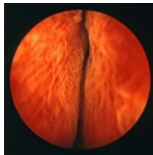
352. Large prostate and large third lobe



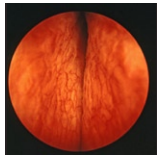
353. Large prostate and third lobe



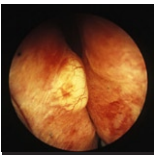
354. Large prostate - middle lower part



355. Large prostate - middle part



356. Large prostate - middle part - upper



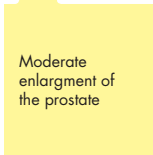
357. Large prostate - middle upper part



358. Large prostate - verumontanum



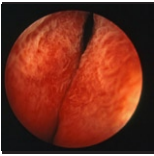
359. Marked prostatic hyperplasia



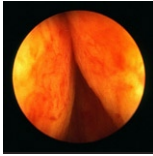
Moderate enlargement of the prostate



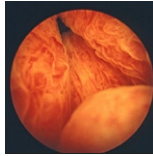
360. Medium sized prostate



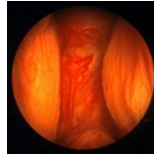
361. Medium sized til large prostate



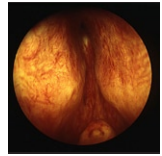
362. Moderately enlarged prostate



363. Moderately enlarged prostate and varicose vessels

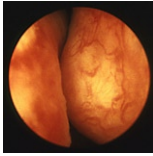


364. Moderately enlarged prostate + large third lobe



365. Moderately hyperplastic prostate

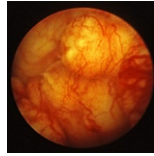
Prostatic cancer



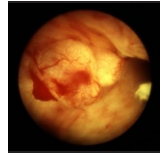
366. Prostatic cancer - asymmetry



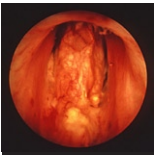
367. Prostatic cancer - asymmetry



368. Prostatic cancer growing into the bladder



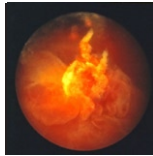
369. Prostatic cancer growing into the bladder



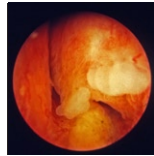
370. Prostatic cancer growing into the urethra



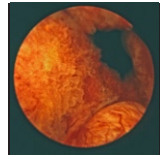
371. Prostatic cancer growing into the urethra



372. Prostatic cancer in the urinary bladder

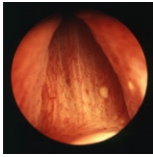


373. Prostatic cancer - asymmetry



374. Prostatic cancer - epithelial dysplasi in pars prostatica urethrae

Slight enlargement of the prostate



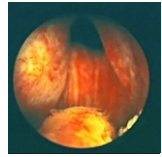
375. Slight hyperplasia of the prostate



376. Slight hyperplasia of the prostate

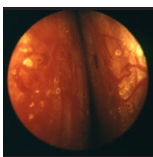


377. Slight to moderate hyperplasia of the prostate

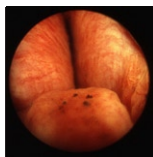


378. Slightly to moderately enlarged prostate

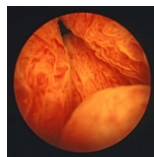
Urothelial cancer in prostatic urethra + varicose vessels + concrements



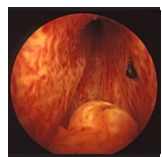
379. Crystals of uric acid on the prostate surface



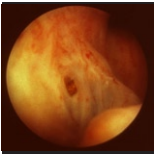
380. Large hyperplastic prostate and subepithelial concrements



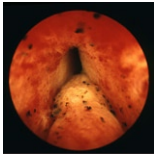
381. Large vessels. Moderately enlarged prostate



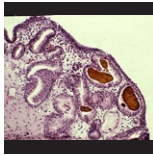
382. Small stone in prostatic ductulus



383. Stone in prostatic ductulus. Verumontanum at 5 o'clock



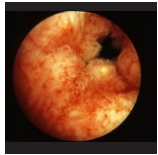
384. Subepithelial, small prostatic concretions



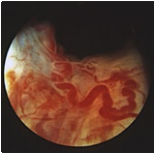
385. Subepithelial concretions of the prostate



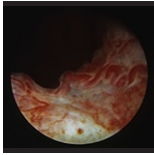
386. Urothelial cancer grade 2 in the prostatic part of the urethra



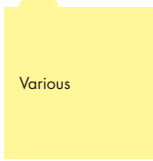
387. Urothelial cancer grade 2 in the prostatic part of the urethra



388. Varicose veins at the internal opening of the urethra



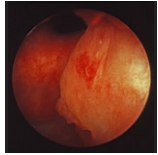
389. Varicose vessels in the prostatic part of the urethra



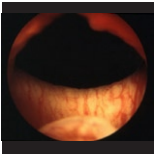
Various



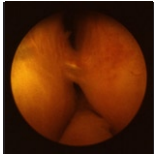
390. Recurrent adenoma after open operation



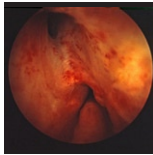
391. Recurrent adenoma after open operation



392. Sign of Schramm - widely open internal urethral orifice. Neurologic disease

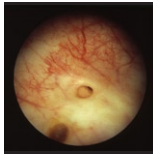


393. Two urethra openings after cystoscopy (trauma)

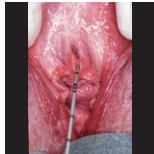


394. Two urethra openings after incomplete TUR-P

## Ectopic ureteral orifice



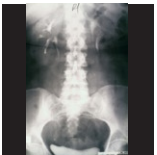
395. Abnormal refluxing ureteral orifice and cystitis cystica



396. Ectopic ureteral orifice



397. Refluxing ureteral orifice



398. Ureteral duplication on the left side



Case report ectopic ureteral orifice



**LOFric**<sup>®</sup>  
Primo<sup>™</sup>

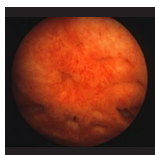
Safe and Smart



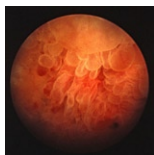


# Indwelling catheter - complications

Bladder wall oedema  
- decubitus  
- bleeding



399. Bladder roof oedema caused by catheter tip



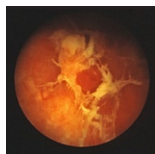
400. Bladder roof oedema caused by catheter tip



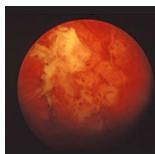
401. Catheter tip decubitus



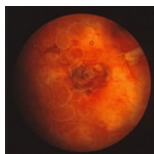
402. Catheter tip oedema



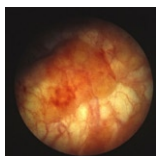
403. Decubitus caused by catheter tip



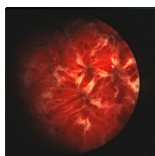
404. Decubitus caused by catheter tip



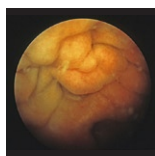
405. Catheter tip injury of bladder roof



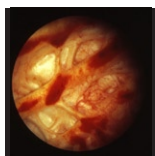
406. Slight catheter tip oedema



407. Subepithelial bleeding caused by catheter tip

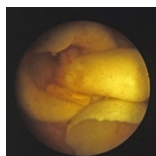


408. Thickwalled, contracted bladder caused by indwelling catheter



409. Trabeculated bladder with subepithelial catheter tip induced bleedings

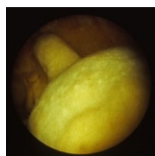
Catheter balloon encrustments



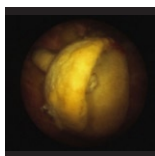
410. New and old catheter balloon casts



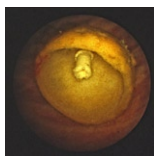
411. Bladder stones. Patient with indwelling catheter



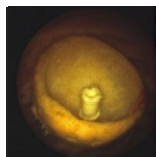
412. Catheter balloon cast



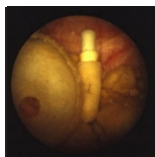
413. Catheter balloon cast



414. Catheter balloon cast



415. Catheter balloon cast



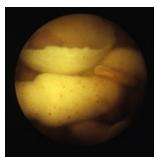
416. Catheter balloon cast + catheter tip



417. Catheter balloon cast seen from the inside



418. Catheter balloon encrustment



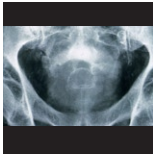
419. Catheter tip, catheter balloon cast, piece of rubber



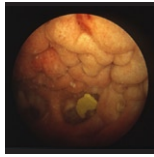
420. Catheters with slight encrustment after 30 days



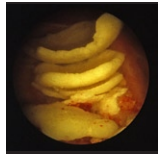
421. X-ray. Encrusted catheter balloon



422. X-ray. Encrusted catheter balloon - close-up view



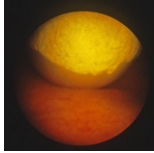
423. Contracted bladder + small stone caused by longtime indwelling catheter



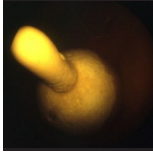
424. Eggshell concretum pile



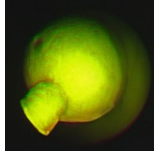
425. Encrusted catheter balloon



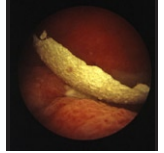
426. Encrusted catheter balloon - side view - suprapubic cystoscopy



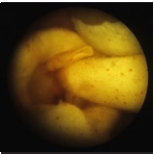
427. Encrusted catheter balloon



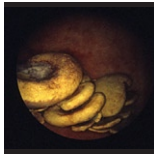
428. Encrusted catheter balloon - suprapubic cystoscopy



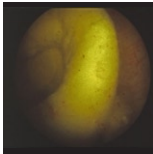
429. Indwelling catheter - eggshell encrustment



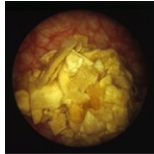
430. Old and new catheter balloon casts



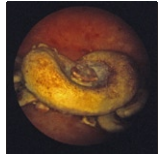
431. Old balloon casts looking like soup-plates



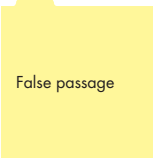
432. Old catheter balloon stone



433. Pile of cracked catheter balloon encrustment



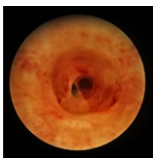
434. Soup plate stone - old balloon encrustment



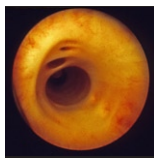
False passage



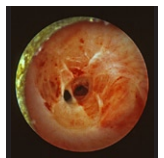
435. False urethral passage. Splint in true urethra



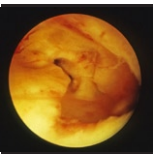
436. Old urethral stricture A, false passage to patients left



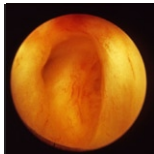
437. Remnants of small false passages in the urethra



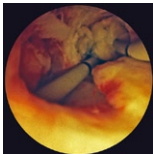
438. Urethral stricture A (left) and false passage (right, larger) in urethra



439. Urethral fistulation and stricture in leukaemic man with indwelling catheter



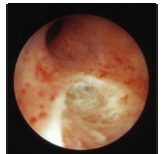
440. Urethral stricture and fistulation in leukaemic man with CAD. Some months later



441. Urethral stricture and fistulation in leukaemic man with indwelling catheter

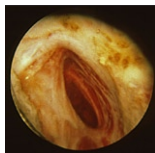


442. Urethral stricture after TUR-P. False passage below

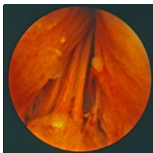


443. Wedged-shaped false passage in the urethra

False passage\  
False passage in  
the prostate



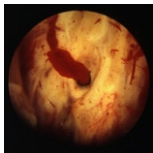
444. Deep and large  
false passage in the  
prostate



445. False passage in  
left lobe of the prostate



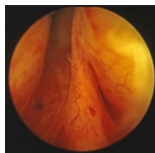
446. False passage in  
the prostate



447. Fresh false  
passage A in the left  
lobe of prostate



448. Healed false  
passage A in left lobe  
of prostate

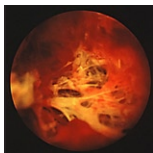


449. Healed false  
passage in the prostate



450. Old false passage  
in the prostate

False passage\  
False passage into  
corpus spongiosum  
urethrae



451. Deep false  
passage into corpus  
spongiosum urethrae

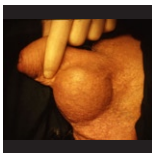


452. Deep false passage  
in male urethra-corpus  
spongiosum!!

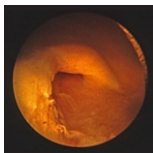


453. Deep false  
passage into corpus  
spongiosum urethrae

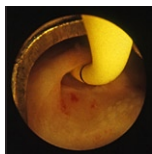
Strange urethral  
swelling



454. Strange scrotal  
swelling



455. Catheter balloon  
dilated urethra



456. Splint in normal  
urethra from the  
urethral dilatation

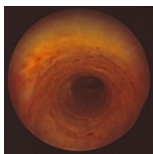


Case report. Strange  
swelling

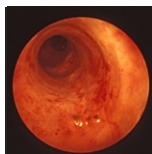
Urethritis caused  
by indwelling  
catheter



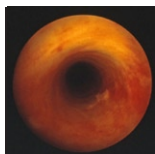
457. Catheter  
occasioned urethritis



458. Catheter-caused  
urethritis



459. Indwelling  
catheter urethritis



460. Indwelling  
catheter urethritis



461. Membrane and  
urethritis caused by  
indwelling catheter

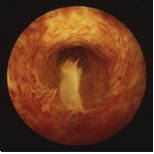


462. Membranous  
urethritis caused by  
indwelling catheter



463. Urethra after  
some days with  
indwelling catheter



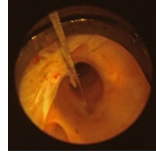


464. Urethritis caused by indwelling catheter

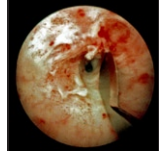
## Internal urethrotomy



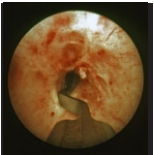
465. Internal urethrotomy



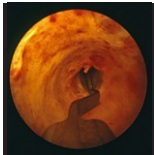
466. Internal urethrotomy



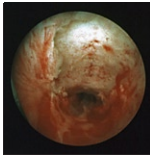
467. Internal urethrotomy



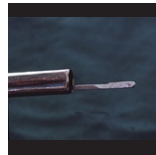
468. Internal urethrotomy



469. Internal urethrotomy

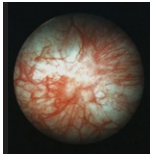


470. Internal urethrotomy - stricture cut open

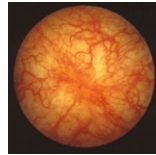


471. Internal urethrotomy - the knife

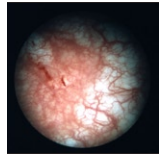
## Interstitial (Hunner) - cystitis



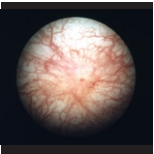
472. Hunnercystitis - scar



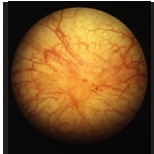
473. Hunnercystitis - early stage - oedema



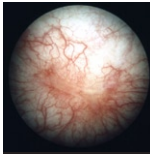
474. Hunnercystitis - haemorrhage and oedema



475. Hunnercystitis - scar

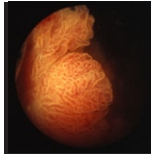


476. Hunnercystitis - scar

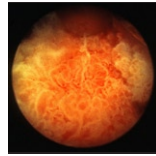


477. Interstitial cystitis - scar

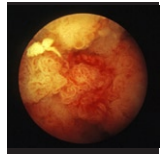
## Intrusion from outside the bladder



478. Colonic cancer growing in the bladder



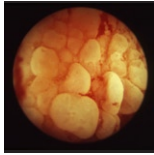
479. Colonic cancer growing in the bladder



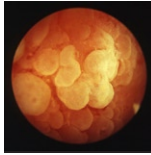
480. Colonic cancer growing in the bladder



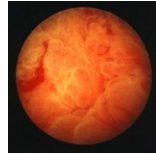
481. Impression in left bladder wall caused by sigmoid cancer not invading bladder



482. Oedema caused by colonic cancer invading the bladder

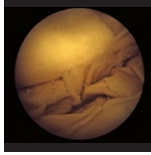


483. Oedema caused by sigmoid cancer

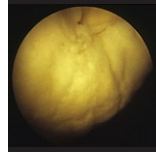


484. Oedema close to colonic cancer invading bladder

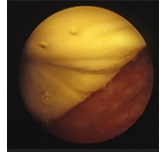
## Large Bladder Bezoar



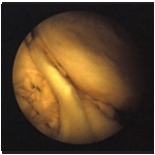
485. Bezoar cystoscopy



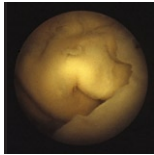
486. Bezoar cystoscopy



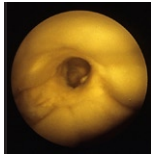
487. Bladder bezoar



488. Bladder bezoar cystoscopy



489. Bladder bezoar - Looking like miss Piggy



490. Bladder bezoar penetrated by the cystoscope



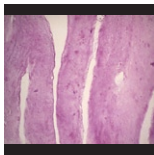
491. Bladder bezoar removed from the bladder



492. Bladder bezoar - size



493. Bladder bezoar X-ray



494. Bladder bezoar - microscopic examination

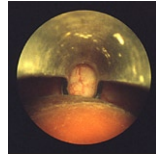


495. *Candida albicans* - very few - on microscopic examination of bladder bezoar

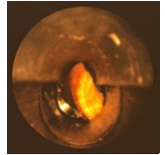
## Litholapaxy



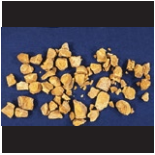
496. Stone punch



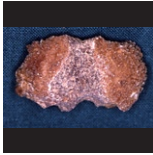
497. Litholapaxy



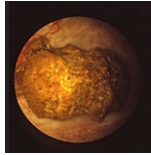
498. Litholapaxy



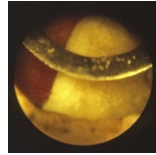
499. Stone fragments after litholapaxy



500. Stone too hard to handle with litholapaxy

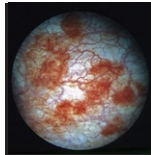


501. Stone too hard to handle with litholapaxy

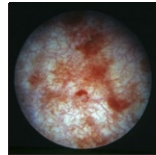


502. Litholapaxy - curette

## Non specific cystitis - inflammation



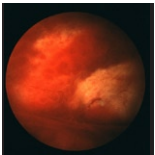
503. Abating haemorrhagic bacterial cystitis



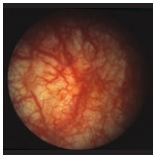
504. Abating haemorrhagic cystitis



505. Acute bacterial cystitis and prostatitis



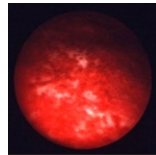
506. Acute bacterial haemorrhagic cystitis



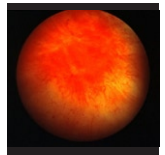
507. Acute cystitis and prostatitis



508. Acute, haemorrhagic cystitis



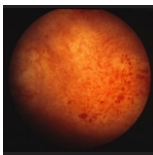
509. Bacterial haemorrhagic (velvet) cystitis



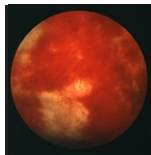
510. Bladder diverticulum with non-specific inflammation



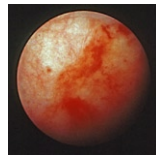
511. Cystitis, non-specific



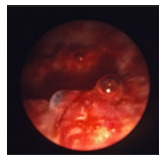
512. Diffuse, non-specific cystitis



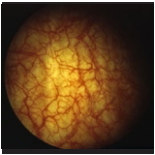
513. Haemorrhagic, bacterial cystitis



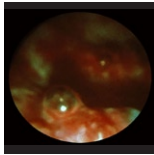
514. Haemorrhagic, non-specific cystitis



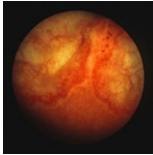
515. Haemorrhagic cystitis and cystitis cystica



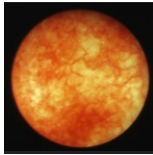
516. Mild, non-specific cystitis



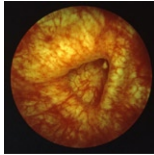
517. Non specific haemorrh. cystitis + cystitis cystica



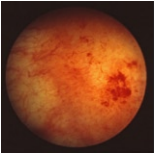
518. Non-specific cystitis



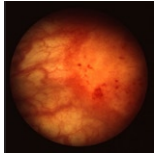
519. Non-specific cystitis in man with bacterial prostatitis



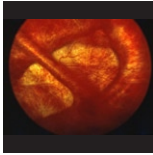
520. Non-specific cystitis in trabeculated bladder



521. Non-specific cystitis with haemorrhage



522. Non-specific cystitis and oedema



523. Trabeculated bladder with non-specific cystitis

## Normal anatomy + epithelial metaplasia + pseudopolyps

## Introducing slides



524. Coat of arms - Royal Urologic Department of Umeå

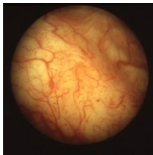


525. Cover picture - Atlas of cystoscopy

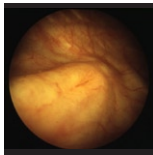


Coat of Arms - Royal Department of Urology

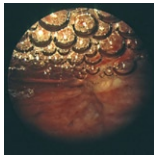
## Normal bladder



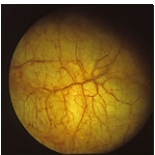
526. Difficult to see - ureteral orifice



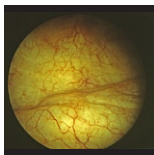
527. Sleeping ureteral orifice



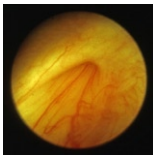
528. Air bubbles at bladder roof



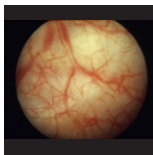
529. Bladder - normal



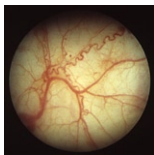
530. Bladder - normal



531. Broad ureteral orifice and blood vessels leading into it



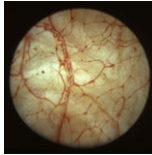
532. Compressed vessels in filled bladder



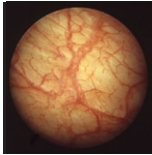
533. Corkscrew vessels - normal bladder



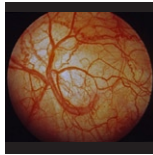
534. Left uretral orifice - normal



535. Normal bladder - funny vessels



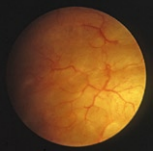
536. Normal bladder



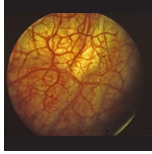
537. Normal bladder - corkscrew vessels



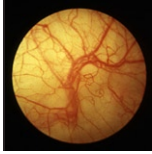
538. Normal bladder epithelium



539. Normal bladder - infrequent vessels



540. Normal bladder rich in vessels



541. Normal bladder epithelium



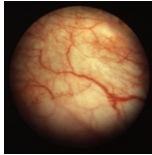
542. Normal bladder looking like optical nerve



543. Normal bladder - vessel looking like a hydra



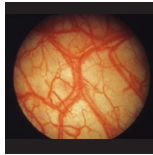
544. Normal bladder. Airbubble impressed by uterus



545. Normal bladder + epithelial metaplasia



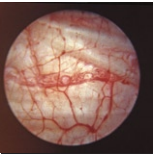
546. Normal bladder - abnormal vessels



547. Normal bladder - autostrada vessels



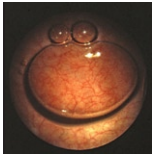
548. Normal bladder - corkscrew vessels



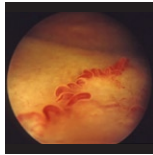
549. Normal bladder - funny vessels



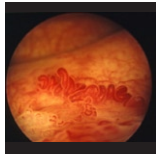
550. Normal bladder - rich in vessels



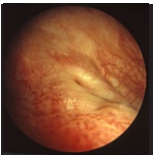
551. Normal bladder - roof air bubble looking like a frog



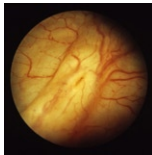
552. Normal bladder - varicose vessel



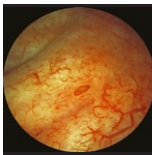
553. Normal bladder - varicose vessels



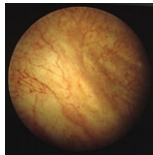
554. Normal right ureteral orifice



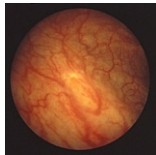
555. Normal, well visible ureteral orifice



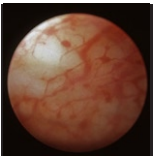
556. Slightly abnormal ureteral orifice



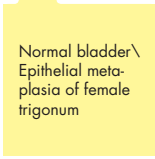
557. Ureteral orifice a bit difficult to see



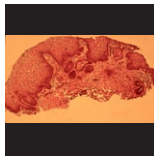
558. Ureteral orifice - difficult to discover



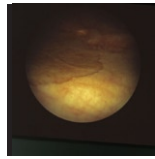
559. Vessel compression in maximally filled bladder



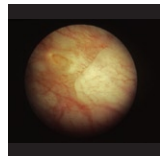
Normal bladder \  
Epithelial metaplasia of female trigonum



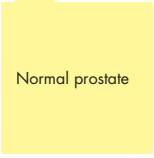
560. Biopsy epithelial metaplasia - female trigonum



561. Epithelial metaplasia female trigonum



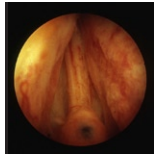
562. Epithelial metaplasia, female trigonum



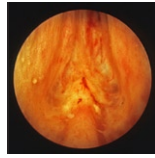
Normal prostate



563. Crista urethralis



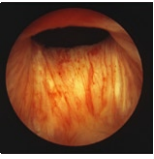
564. Crista urethralis-like extension above the verumontanum prostatae



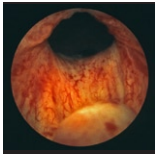
565. Normal but difficult to see verumontanum



566. Normal crista urethralis with a small cyst



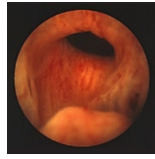
567. Normal prostate



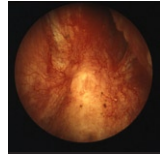
568. Normal prostate



569. Normal prostate with ductuli orifices



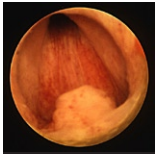
570. Normal prostate with ductuli



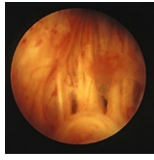
571. Normal prostate, difficult to see verumontanum



572. Normal prostate, duplicated crista urethralis-like extension above the verumontanum



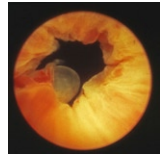
573. Normal prostate, well visible verumontanum



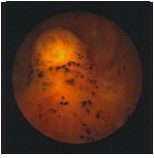
574. Normal prostate. Openings of vas deferens well visible



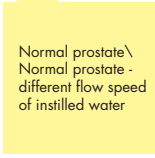
575. Normal verumontanum



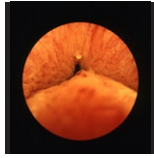
576. Small cyst at the bladder neck



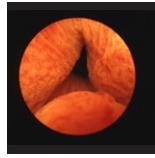
577. Subepithelial concretions in the verumontanum epithelium



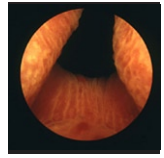
Normal prostate \  
Normal prostate - different flow speed of instilled water



578. Normal prostate - young man - no fluid instilled



579. Slow fluid instillation

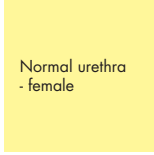


580. Moderate flow of instilled water





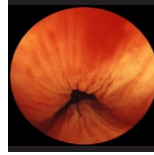
581. Rapid flow of instilled water



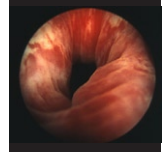
Normal urethra  
- female



582. Normal female urethra



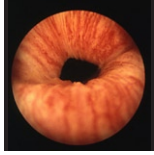
583. Normal female urethra



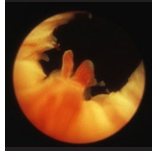
584. Normal female urethra



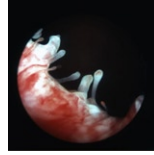
585. Proximal opening of female urethra



586. Proximal urethral opening of normal female urethra



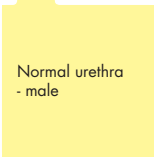
587. Pseudopolyps close to the internal meatus - female urethra



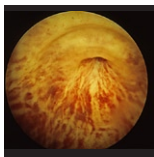
588. Pseudopolyps in the female urethra close to the internal meatus



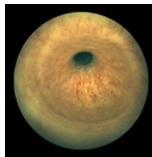
589. Pseudopolyps of the female urethra - close to the internal meatus



Normal urethra  
- male



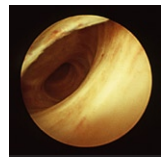
590. Pars membranacea - normal



591. External sphincter - normal



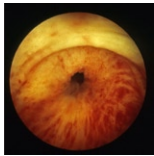
592. External sphincter - normal



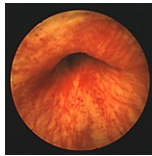
593. Normal fossa navicularis + the pendant part of the urethra



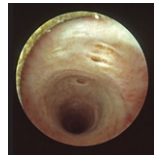
594. Normal male external sphincter



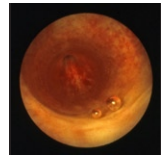
595. Normal pars membranacea



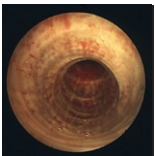
596. Normal pars membranacea



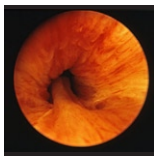
597. Normal pars pendulans (fluid filled light cable). Urethral gland openings!



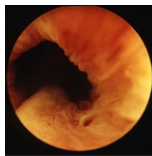
598. Normal proximal urethra. Air bubbles in the lubricating jelly



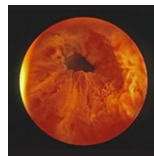
599. Normal proximal urethra. Impressions of the bulbocavernosus muscle!



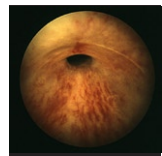
600. Normal proximal urethra. Opening of the gland of Cowperi



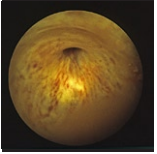
601. Opening of glandula Cowperi



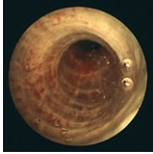
602. Pars membranacea - normal



603. Pars membranacea - normal



604. Pars membranacea - normal

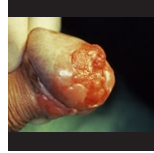


605. Proximal urethra - normal. Air bubbles in lubricating jelly

## Penis + external urethral orifice



606. Balanitis xerotica obliterans



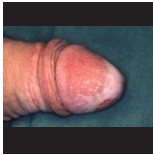
607. Carcinoma of the penis



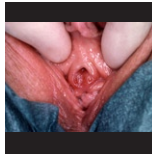
608. Carcinoma of the penis



609. Hypospadias glandis



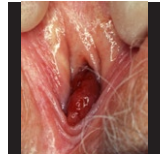
610. Lichen sclerosus



611. Malignt lymphoma in external urethral orifice



612. Non specifik inflammation (PAD)

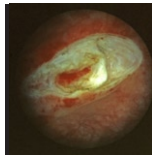


613. Urethral caruncula

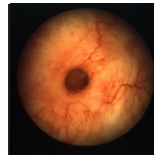


614. Urethral caruncula

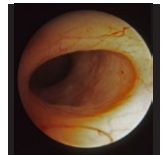
## Resection of ureteral orifice



615. Fairly deep resection of ureteral orifice

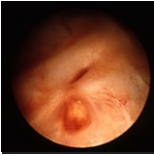


616. Healed resected ureteral orifice

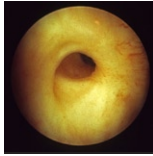


617. Looking into resected refluxing ureter

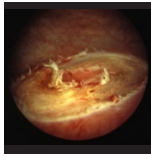




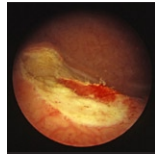
618. Re-implanted ureter and suture granuloma



619. Resected, refluxing ureteral orifice

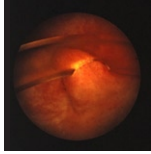


620. Superficial resection of ureteral orifice

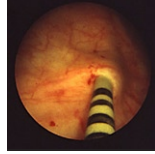


621. Superficial resection of ureteral orifice

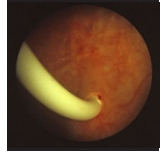
## Suprapubic cystoscopy + ureteral stent



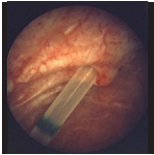
622. Bladder wall sucked into drainage hole of a catheter



623. Catheter inserted into left ureteral orifice



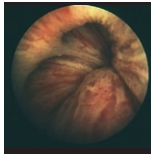
624. Double-J-catheter in ureteral orifice



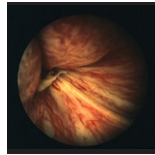
625. Suprapubic catheter during TUR



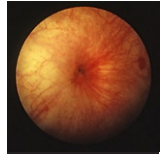
626. Suprapubic catheter - indwelling



627. Suprapubic cystoscopy - hyperplasia



628. Suprapubic cystoscopy - hyperplastic prostate



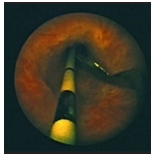
629. Suprapubic cystoscopy - primary bladder neck sclerosis



630. Suprapubic cystoscopy - third lobe

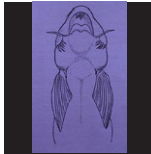


631. Tip of catheter



632. Urethral stricture - urethrotomia interna - catheter through stricture

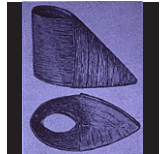
## The Amazon River Fish



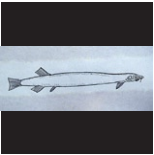
633. Amazon river fish



634. Amazon river fish



635. Amazon river fish. Penis protection



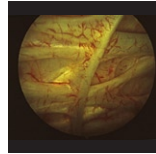
636. Amazon river fish - lateral view

Amazon River Fish

## Trabeculation



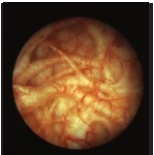
637. Bladder trabeculation



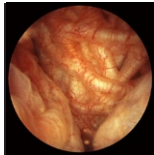
638. Maximally distended trabeculated bladder



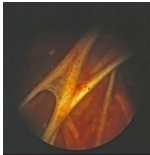
639. Trabeculation



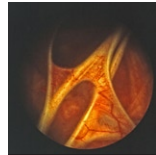
640. Trabeculation



641. Trabeculation, bladder half-filled



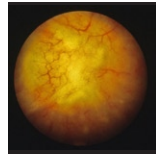
642. Trabeculation - thinwalled bladder - woman



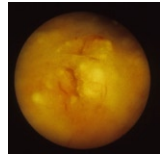
643. Trabeculation - thinwalled bladder - woman

## Tuberculous cystitis - Bilharzia - Amyloidosis

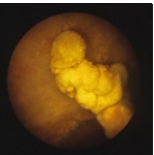
## Bilharzia



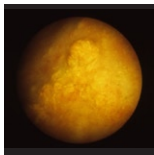
644. Bilharzian subepithelial eggs



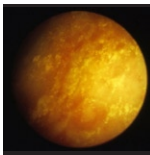
645. Bilharzian tubercles at the left ureteral orifice



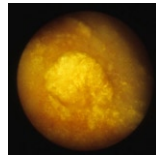
646. Bilharzian tuberculoma



647. Bilharzia - sandy patches

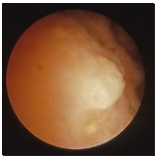


648. Bilharzia - sandy patches

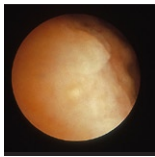


649. Bilharzia - sandy patches + tuberculoma

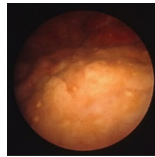
## Bladder amyloidosis



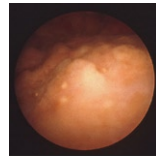
650. Bladder amyloidosis



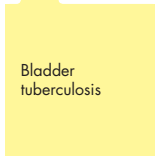
651. Bladder amyloidosis



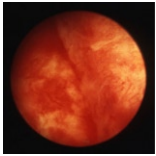
652. Bladder amyloidosis



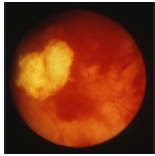
653. Bladder amyloidosis - left bladder wall



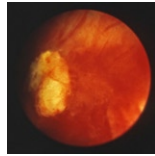
Bladder tuberculosis



654. Active bladder tuberculosis



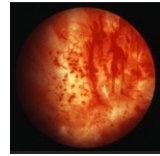
655. Active bladder tuberculosis



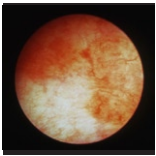
656. Active bladder tuberculosis



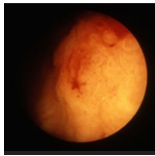
657. Active tuberculous cystitis



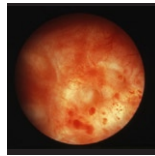
658. Bladder tuberculosis treated for five months



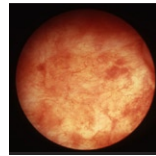
659. Bladder tuberculosis treated for five months



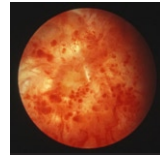
660. Bladder tuberculosis treated for five months



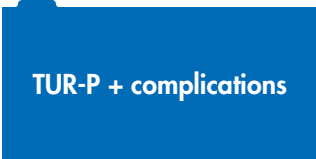
661. Bladder tuberculosis treated for five months



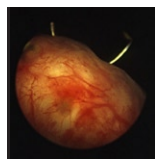
662. Healing bladder tuberculosis after five months of treatment



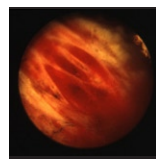
663. Marked granulomatous changes after five months of treatment. Bladdertuberculosis



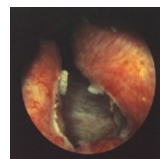
TUR-P + complications



664. Beginning TUR-P, large prostate



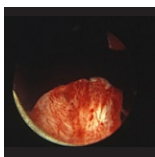
665. Bleeding venous sinusoids close to the prostatic capsule



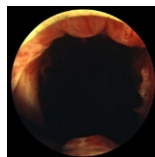
666. English channel in a patient in bad condition



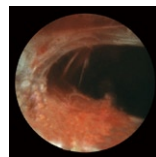
667. Excellent TUR-P, verumontanum at six o'clock



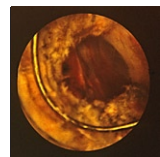
668. Excellent TUR-P, Verumontanum.



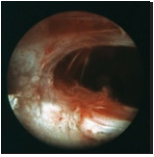
669. Excellent TUR-P - verumontanum at six o'clock



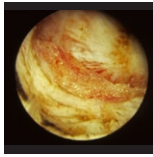
670. Large capsular perforation



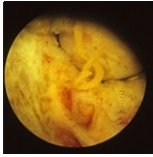
671. Large capsule perforation during TUR-P



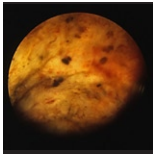
672. Large perforation during TUR-P



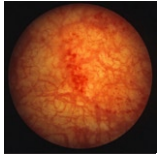
673. Prostatic capsule perforation - fat tissue protruding



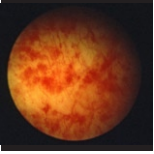
674. Secretions empty from the prostate during TUR-P



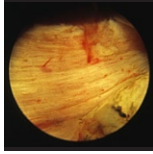
675. Small concrement in the prostate during TUR-P



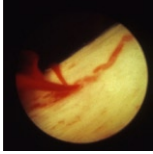
676. Subepithelial bleeding caused by resection tube



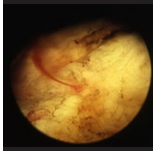
677. Subepithelial bleedings caused by resection tube



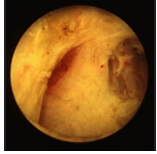
678. TUR-P internal sphincter



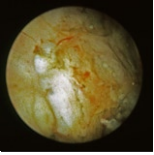
679. TUR-P bleeding from vessel at internal sphincter



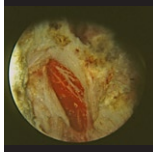
680. TUR-P bleeding from vessel in hyperplastic tissue



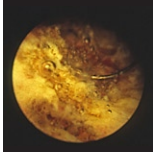
681. TUR-P capsular perforations



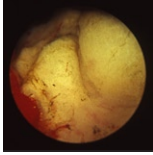
682. TUR-P carcinomatous tissue



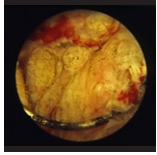
683. TUR-P fairly large perforation of the prostatic capsule



684. TUR-P gas bubbles



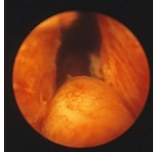
685. TUR-P hyperplastic tissue



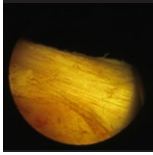
686. TUR-P hyperplastic tissue



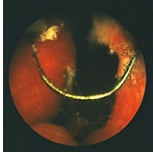
687. TUR-P incomplete resection



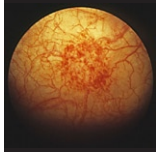
688. TUR-P incomplete resection



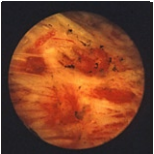
689. TUR-P internal urethral sphincter



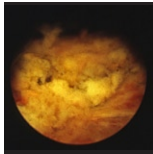
690. TUR-P left lobe resected



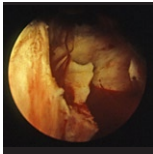
691. TUR-P love bite by resection tube



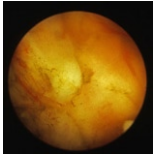
692. TUR-P prostate capsule and very small concretions



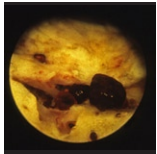
693. TUR-P unexpected cancer



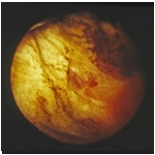
694. TUR-P upper half of right lobe resected



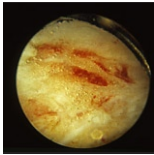
695. TUR-P, prostatic cancer



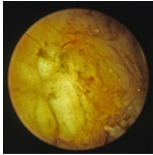
696. TUR-P, prostatic concretions



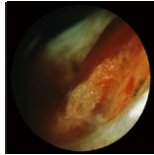
697. TUR-P, slightly more tissue remains



698. TUR-P, small perforations



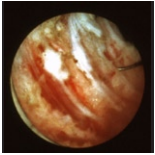
699. TUR-P, unexpected prostatic cancer (yellowish tissue)



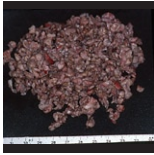
700. TUR-P, small perforation - fat tissue intruding



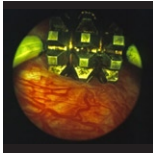
701. TUR-P. Love bite by resection tube



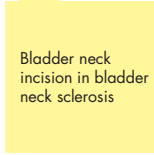
702. TUR-P-prostatic capsule



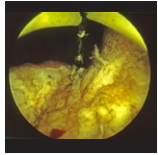
703. End result of TUR-P



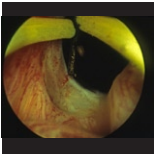
704. Evaporating the prostate



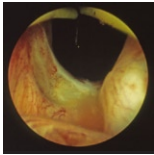
Bladder neck incision in bladder neck sclerosis



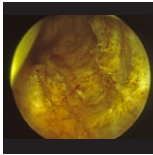
705. Bladder neck incision half-way



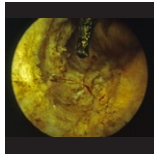
706. Bladder neck sclerosis Bladder neck incision



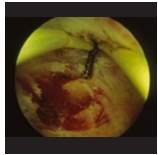
707. Bladder neck sclerosis Incision to be started



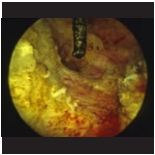
708. Neck incision at 4 o'clock



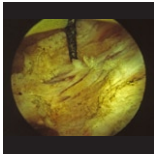
709. Neck incision at 8 o'clock. Approaching capsule



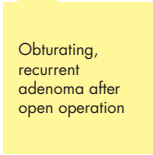
710. Prostatic capsule almost cut through



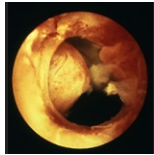
711. Prostatic capsule at 4 o'clock incision



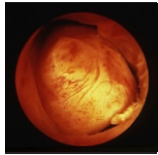
712. Prostatic capsule at bladder neck incision



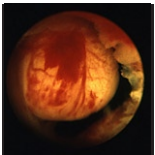
Obturing, recurrent adenoma after open operation



713. Recurrent adenoma during fluid instillation



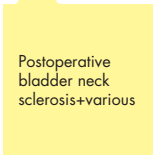
714. Recurrent adenoma during fluid emptying



715. Recurrent adenoma after open operation - falling down into the urethra



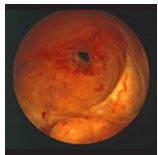
Case report



Postoperative bladder neck sclerosis+various

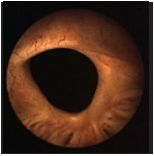


716. Bladder neck sclerosis after TUR-P

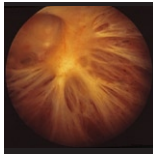


717. Bladder neck sclerosis after open operation

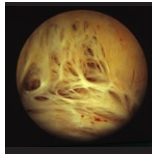




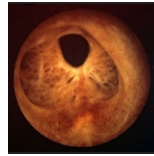
718. Bladder neck sclerosis after TUR-P



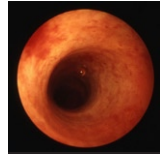
719. Bladder neck sclerosis after transvesical adenoma enucleation



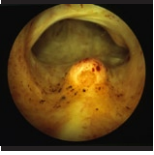
720. Bladder neck sclerosis after TUR-P



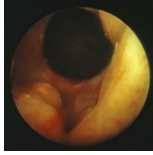
721. Bladder neck sclerosis after TUR-P. Verumontanum at six o'clock



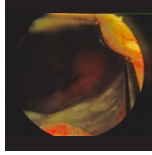
722. Injected, reddened urethra immediately after TUR-P



723. Prostatic cavity one year after TUR-P



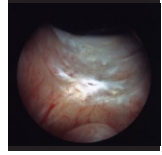
724. Prostatic cavity eleven months after TUR-P



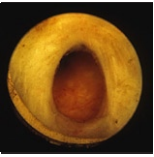
725. Prostatic cavity one year after TUR-P



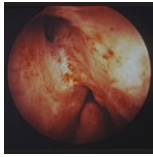
726. Stricture of the urethra caused by TUR-P



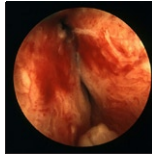
727. TUR-P cavity after six months



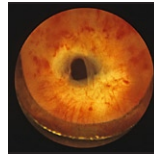
728. TUR-P vas opening, close up



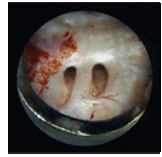
729. Two urethra openings after incomplete TUR-P



730. Two urethra openings after insufficient TUR-P



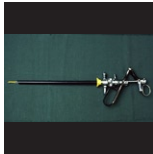
731. Urethral stricture caused by TUR-P



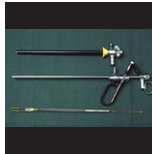
732. Vas openings after TUR-P



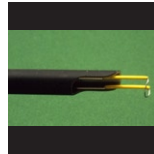
The resectoscope



733. Resectoscope



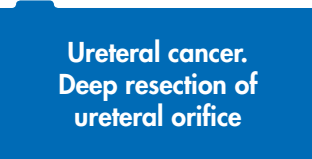
734. Resectoscope components



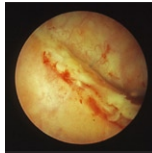
735. Resectoscope tip



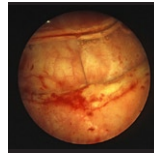
736. TUR-P



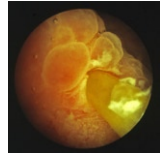
Ureteral cancer.  
Deep resection of ureteral orifice



737. EP - Bladder scar 10 days after open op. and reimplant. of ureter

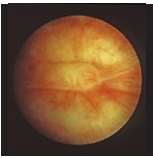


738. EP - 10 days after open op. and reimplant. of ureter

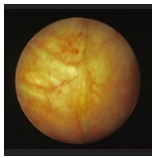


739. EP - After open operation reimplant. of ureter 10 days

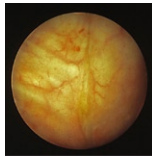




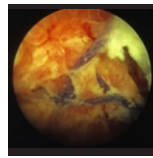
740. EP - Bladder scar 10 days after operation



741. EP - Bladder scar 10 days after operation



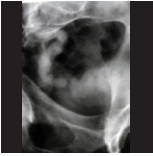
742. EP - Bladder scar 10 days after operation



743. EP - 10 days after open operation, reimplant. of ureter



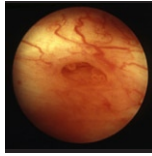
744. EP - Iv urographi after deep resection



745. EP - Iv urographi after deep resection - stasis



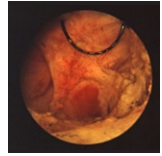
746. EP - Iv urographi six months after reimplantation



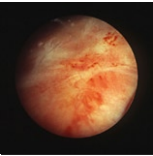
747. EP - Resected ureteral cancer - recurrence



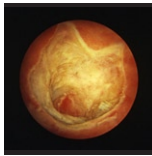
748. EP - Resected ureteral cancer - recurrence



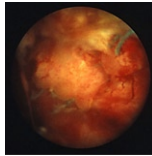
749. EP - Deeply resected orifice



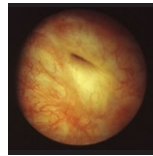
750. EP - Deeply resected orifice - scarred



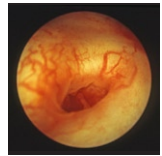
751. EP - Deeply resected orifice - tumour free



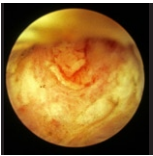
752. EP - Re-implanted ureter after seven days



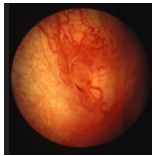
753. EP - Re-implanted ureter after 6 months



754. EP - Resected ureteral cancer. Tumour recurrence



755. EP - Resected ureteral orifice - more tumour



756. EP - The recurrent tumour puts out its tongue against the intruder

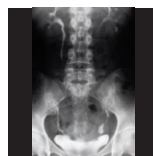


Case report EP

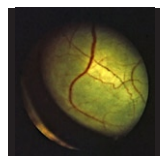
## Ureterocele A and B



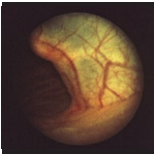
757. I.v. urographi before TUR-A



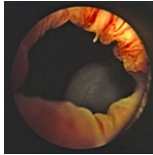
758. I.v. urographi after TUR-A



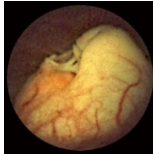
759. Left ureterocele A



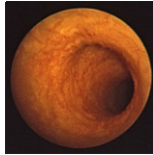
760. Left ureterocele A before TUR



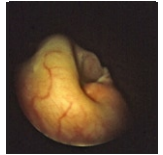
761. Left ureterocele A viewed from urethra



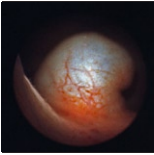
762. Left ureterocele, cut open by TUR



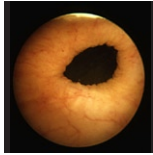
763. Looking into ureter running into ureterocele A



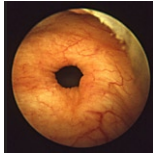
764. Right ureterocele half-filled A



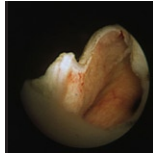
765. Right ureterocele A before TUR



766. Ureter running into ureterocele A, close up



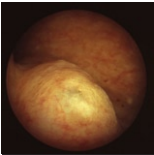
767. Ureter running into ureterocele A. Refluxing



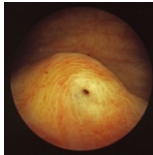
768. Ureterocele A. TUR halfway



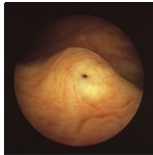
Case report - ureterocele A



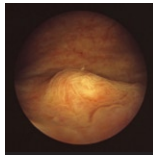
769. Small ureterocele B distended



770. Small ureterocele B half-filled



771. Ureterocele B, slightly filled



772. Ureterocele B, empty

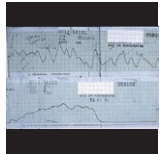
## Urethral diverticulum in male - operation of



773. Urethral diverticulum in male

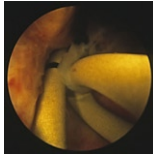


774. Incision of urethral diverticulum in male

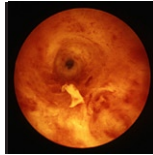


775. Urine flow before and after operation

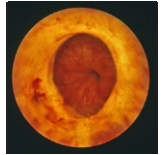
## Urethral stricture-fistulation-diverticulum



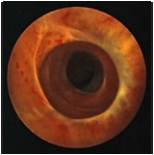
776. Failed attempt to put ureteral catheter through urethral stricture



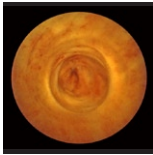
777. Irritated urethral stricture after attempt to catheterizing



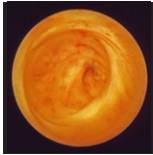
778. Moderate urethral stricture



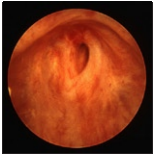
779. Multiple urethral strictures caused by indwelling catheter



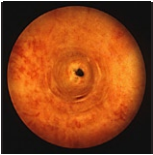
780. Narrow urethral stricture



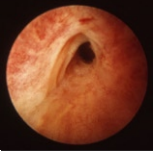
781. Stricture of the urethra



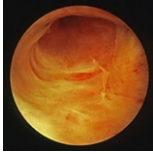
782. Urethral stricture



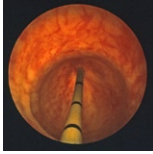
783. Urethral stricture



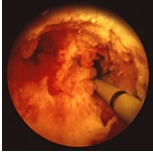
784. Urethral stricture



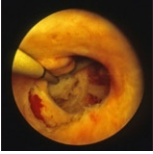
785. Urethral stricture after dilatation



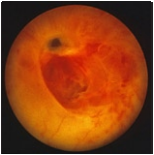
786. Urethral stricture with ureteral catheter



787. Urethral stricture with ureteral catheter. False passage



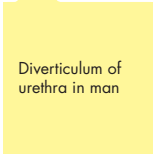
788. Urethral stricture with ureteral catheter + urethral fistulation



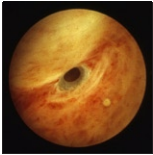
789. Urethral stricture + false passage below



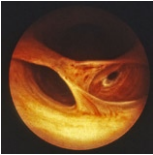
790. Urethral stricture traumatized by catheterizing attempt



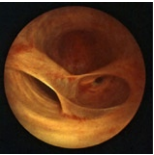
Diverticulum of urethra in man



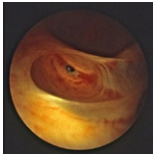
791. Small opening in prox. part of urethral diverticulum



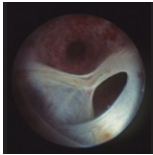
792. Urethral diverticulum A



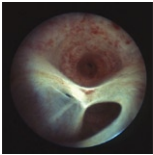
793. Urethral diverticulum A



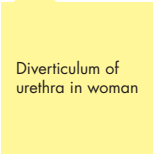
794. Urethral diverticulum A



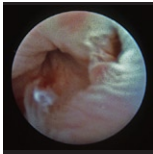
795. Urethral diverticulum B



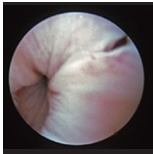
796. Urethral diverticulum B



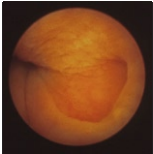
Diverticulum of urethra in woman



797. Urethral diverticulum 1 in woman



798. Urethral diverticulum 1 in woman



799. Urethral diverticulum (to the left) 2 in woman



Safe and Smart

### **LoFric® Primo™ is safe**

- Urotonic™ Surface Technology
- Optimal length and Insertion aid
- Most well documented
- Over 23 years of clinical experience

### **LoFric® Primo™ is smart**

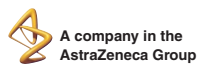
- Foldable and discreet
- Integrated sterile water
- Easy to open
- Insertion aid

## Astra Tech – inventor of LoFric<sup>®</sup>, the first hydrophilic catheter

The indication for bladder catheterisation is any condition of incomplete bladder emptying. There are several alternatives for catheterisation of the bladder. Today, intermittent catheterisation is the method of choice.



*LoFric is the only catheter in the world with **Urotonic Surface Technology** – a patented surface layer technology that makes catheterisation more comfortable for the user.*



Astra Tech AB, P.O. Box 14, SE-431 21 Mölndal, Sweden.  
Tel: +46 31 776 30 00. Fax: +46 31 776 30 10. [www.astratech.com](http://www.astratech.com)